



NEW PAINTINGS

HANS PETERSEN

*Women of
Eccentric Personas*

VOLUME TWO





Contents

5 Introduction

9 Welcome to Hans Petersen Art

10 The Paintings

10 Queenie

12 Natasha

14 Cruella

16 Sabrina

18 Melody

20 Lolita

22 Rebecca

24 Katinka

26 Pernille

28 Tiffany

30 Exhibitions and Recognitions



**All paintings:
72 x 60 inches
Two horizontal canvases**

Hans Petersen's Women of Eccentric Personas Vol. 2

These powerful works by Hans Petersen, the second in his series of Women of Eccentric Personas, reflect the international aesthetic of the CoBra movement and a reverence for Expressionism while maintaining an individual mastery and substance all their own in our time. Petersen's paintings are figurative abstractions of imposing scale that POP! with expressive color and energetic brush strokes.

Presenting a cacophony of colors that vibrate playfully on the canvas Petersen's Personas pull the viewer in for a closer look. We have a visceral response to the paintings through Petersen's use of color and his gutsy approach to laying on the paint. Our eyes can't help but dance around the surface of each canvas while always being drawn back to the subject's face. The art of Portraiture has been around for more than 5,000 years. Petersen's earlier career as a graphic designer informs his subject matter, his sense of color, shape and form. Looking past the paint, we see Petersen's work also reflects a deep understanding art history. He knows the face and the story it tells never stops engaging our imaginations.

Slightly nostalgic illusions to the past, juxtapositions of story lines and iconic images abound in these portraits like visual echoes. Looking at a few of my personal favorites: In Rebecca, we may see a playful pastiche of Munch's, "Scream". In Cruella, the monstrous villainess of 101 Dalmatians is reimagined. Another Persona is all "good vibrations" and tie-dyed colors of a notorious 60's poster girl and then, there is the soft pallet reference to



Nabokov's not-so-innocent heroine in her heart-shaped sunglasses, intentionally childlike and discomfoting. Knowing that a Persona is the social mask one wears in public Petersen's paintings make us ask the questions...Who are these captivating women? Are the portraits meant to be masks? If so, what mysterious roles are these individuals really playing? Or, do we look at the totality of each canvas, the energy of the pallet, the expression of each line of the persona? The immediacy of Hans Petersen's paintings bring us to that creative moment when we are drawn into someone else's story and imagination – both that of the artist's and that of the persona. We make the choice as to how to see the work and we can't stop looking.

Maggi Lawler Kirk
MFA Arts Management, Drexel University
Pennsylvania Academy of the Fine Arts
BFA Moore College of Art



Welcome to Hans Petersen Art

Abstract Expressionist Painter Hans Henrik Petersen - Always a Bold Aesthetic Experience – Powerful, Provocative Action Painting with Intriguing Biometric Forms. Stirring, Rousing, Stimulating Themes. Spirituous Colors and Textures.

Hans Petersen is an international artist. Danish born, he was educated at the Royal Danish Academy of Art in Copenhagen. Though Hans' initial studies were in architecture, his love of abstract expressionism intensified with inspiration from the CoBrA movement, especially Danish artist Asgar Jorn. To this day his work draws on this movement's basic principles of complete freedom of color and form that inject energy and excitement into his work. Hans began his professional life as a graphic designer, moving to New York City in 1976 to become a principal and creative director for a successful design firm. He relocated to Charlotte, NC in 1991, where his innovative graphic design style distinguished the world-renowned International Home Furnishing Center's promotional material for over 15 years.

The creativity that first emerged in grade school art classes with poster paint on butcher paper, matured to a love of abstract expressionism and sustained a career in graphic design, compelled Hans in 2005 to pursue life as a full-time painter. Hans' passion for his painting is matched by those who collect and admire the scope, scale and dynamism of his work.

Currently, Hans resides with his wife Barbara in SC where he paints prolifically in his lake side studio.

Artist Statement: "Painting with impact brings me pleasure. I strive to infuse distinctive color, energy and character into my work to achieve excitement for myself and for others. If it goes unnoticed, it simply wasn't worth (while) painting."



Queenie

72 x 60 inches





Natasha





Cruella

72 x 60 inches





Sabrina

72 x 60 inches





Melody

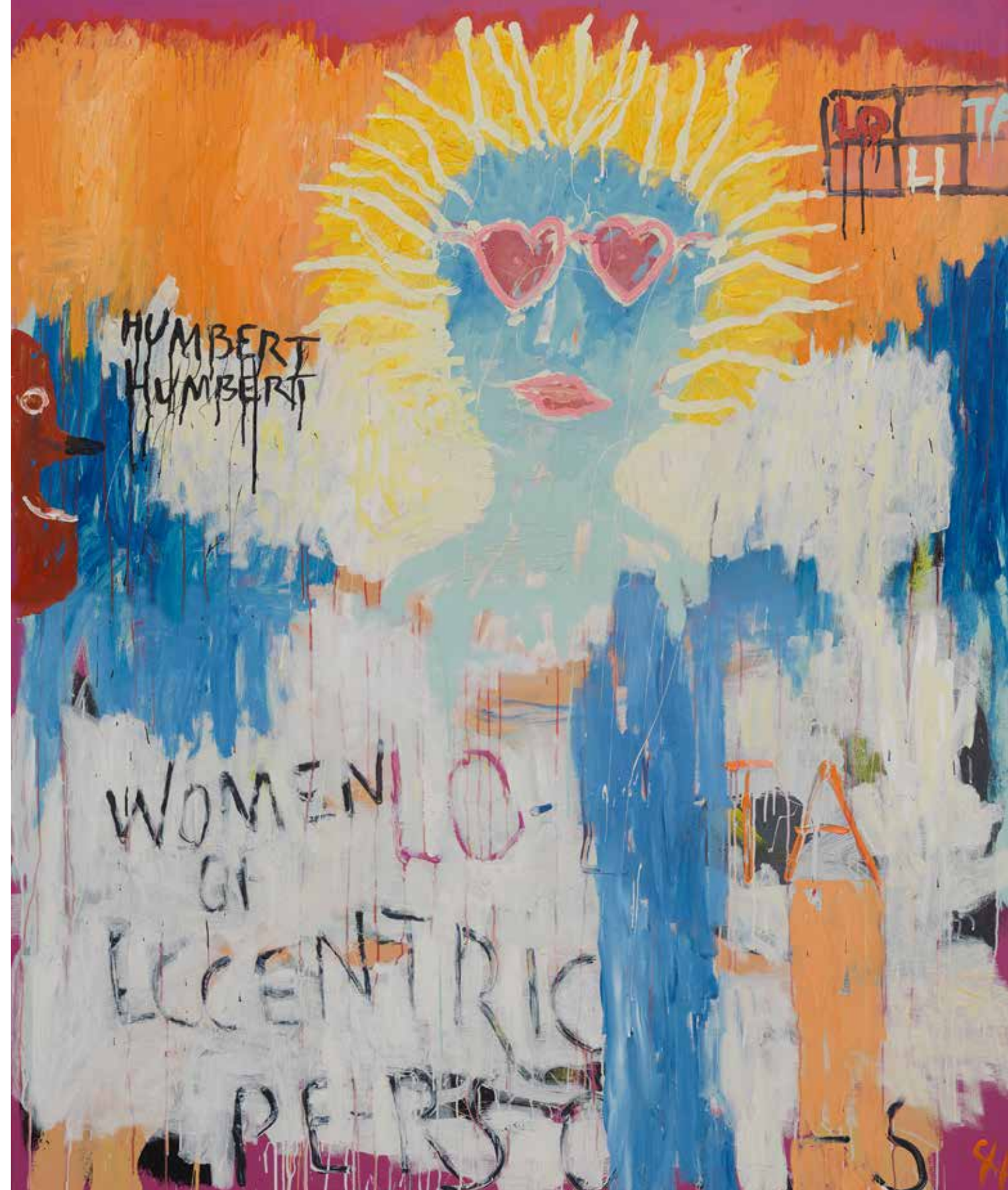
72 x 60 inches





Lolita

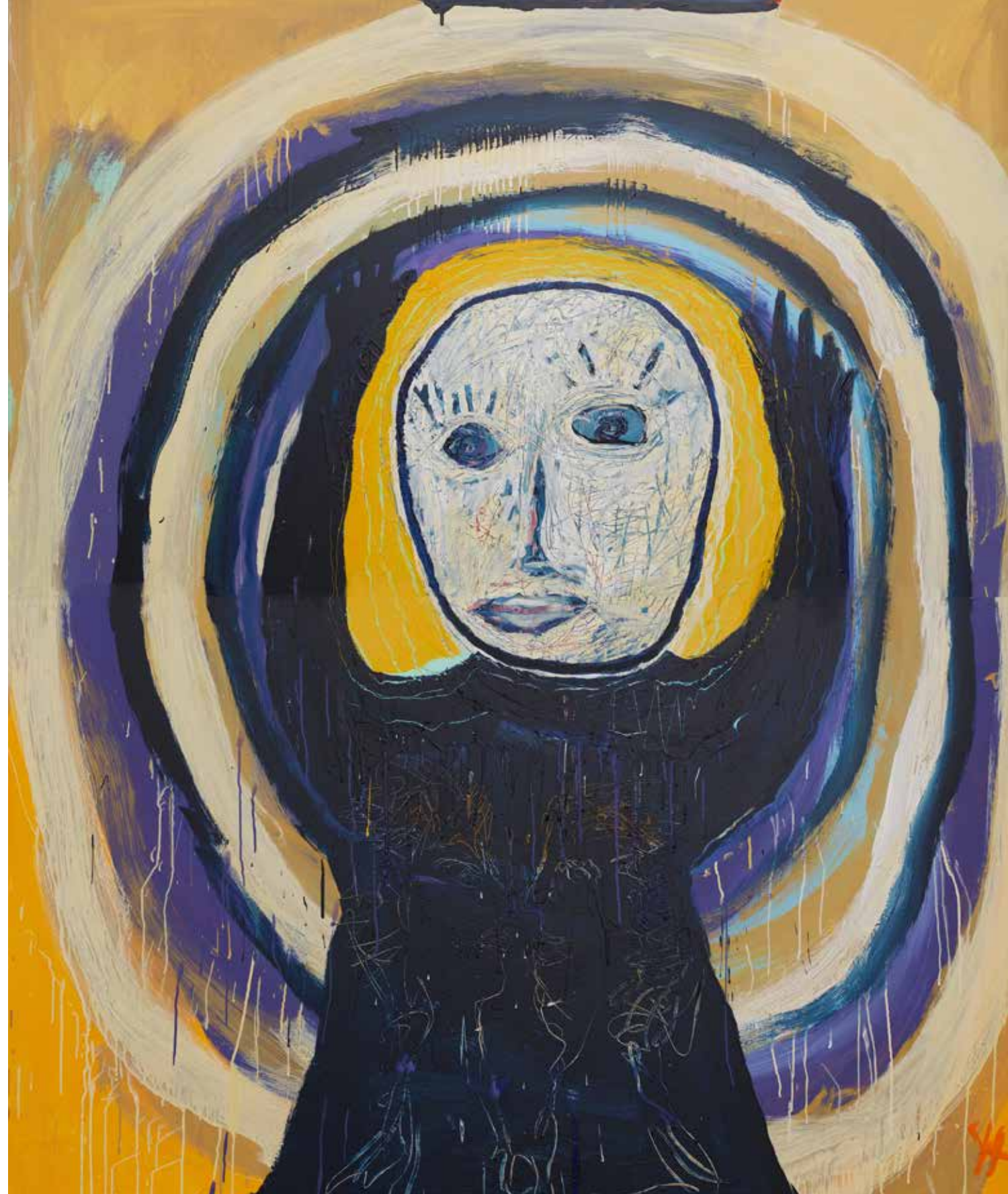
72 x 60 inches

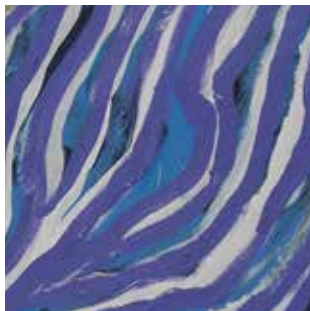




Helena

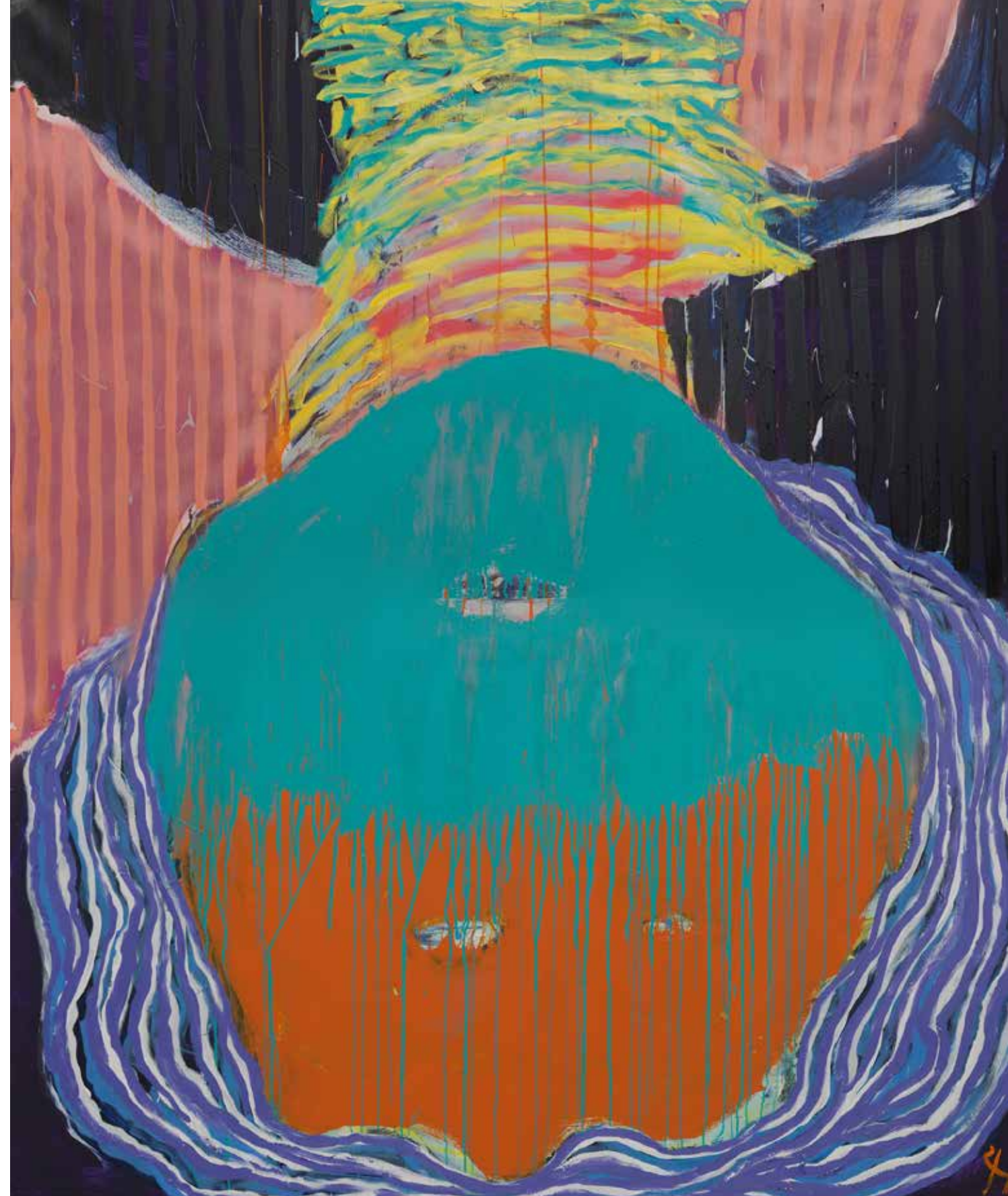
72 x 60 inches





Katinka

72 x 60 inches





Pernille

72 x 60 inches





Tiffany

72 x 60 inches



Exhibitions and Recognitions

- Beaux Arts Festival Coral Gables, FL- January 2011
- The Artists Project Pier 92 New York, NY- March 2011
- Solo Exhibit Hunter Gallery Coconut Grove, FL- June & July 2011
- Miami Solo/Art Basel Miami, FL- December 2011
- Art Business News Top Emerging Artist- November/December 2011
- Beaux Arts Festival Coral Gables, FL - January 2012, Featured Artist of Festival
- Odyssey 2012 Group Exhibit Art Fusion Galleries Miami Design District - January 2012
- Coconut Grove Art Festival Coconut Grove, FL- February 2012
- Art Expo New York Pier 92 New York, NY- March 2012, SOLO Artist Achievement Award
- Art Comes Alive, Cincinnati, OH- June, 2012
- Westport 39th Annual Fine Arts Festival- July 2012, Westport, CT, Best of Show Painter
- National Archive Gallery, Monterey, CA- September 2012
- Group Show Amsterdam Whitney Gallery, Chelsea, NY – September 2012
- Solo Exhibit NAC Gallery, Fort Lauderdale, FL- December 2012
- Art Expo at Art Basel, Miami, FL- December 2012
- Art Expo New York Pier 92 New York, NY- March 2013
- Barsky Gallery, Hoboken, NJ- April 2013 to present
- Castle Fitzjohns Gallery, New York, NY – September 2013 to present
- Art Expo at Art Basel, Miami, FL- December 2012
- Art Expo New York Pier 92 New York, NY- March 2014, April 2015, April 2016
- Beaux Arts Festival Coral Gables, FL - January 2015
- Art Expo New York Pier 92 New York, NY- April 2015, April 2016, April 2017
- Art Basel Spectrum, Miami, FL- Dec 2015
- Gallery 505, Milwaukee, WI - August 2017 to present
- Art Expo New York Pier 94 New York, NY- April 2018

Hans Petersen Art



Represented by Galleries in
California, New Jersey, New York, North Carolina and Wisconsin

Please contact us for inquiries and updates on exhibitions and new work

Studio: 803 324 7318
www.hanspetersenart.com
hanspetersenartdk@gmail.com



The paintings above are from Volume One and Volume Three of Women of Eccentric Personas

HansPetersenArt

Studio: 803 324 7318
www.hanspetersenart.com
hanspetersenartdk@gmail.com