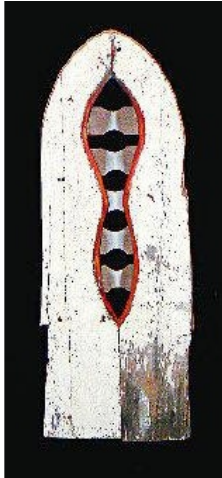


EXHIBIT | ART ACCESS GALLERY

Materials create message

Sunday September 20, 2009 6:30 AM

Sometimes, process is the true subject of an artist's work. By engaging in a kind of exploratory dance -- in which material dictates outcome -- artists can tap ideas of spontaneity, transformation and poetic metaphor.



In "Materials Matter" at Art Access Gallery, Sharon Dougherty, Julie Abijanac and Melinda Rosenberg

allow process to guide their hands. Immersing themselves in their chosen mediums, they arrive at a series of seductive visual experiences.

White by Melinda Rosenberg

Dougherty's calligraphic, abstract paintings take advantage of the fluidity of paint. Her mark is gestural and allows for spontaneous drips and splashes.

In her large-scale abstraction *Cy Twombly*, she pays tribute to one of her artistic heroes.

Fantasy in Red is a take on the abstractions produced by color-field painters. Small, random marks lie beneath and upon a field of red. The red expanse holds everything together.

Abijanac's work is about tactility, surface and viewer interaction. She stacks, stitches and weaves unconventional, often recycled, materials into seductive visual experiences.

In *Untitled #4*, thousands of strips of recycled photocopy paper are looped and stitched together on end. Depending upon your viewpoint, you can see through the loops to the wall or you can see print on each loop's side. Forming a strange, free-form sea coral, patterns of white, gray and subtle green appear and disappear as you move about the piece.

Using materials as diverse as magazine paper, silk, parchment and dress-pattern paper, she seems more interested in the inherent visual qualities of the material rather than their metaphorical possibilities.

Always, she works a kind of transformative magic. In *Untitled #3*, blue fabric shimmers. No longer is the fabric bound to past purpose; reborn, it becomes something new and unexpected.

Rosenberg uses found wood to produce totemlike artifacts. Each piece relies on the distressed, weathered quality of wood to signal nostalgia. The barn siding and fencing add a rural quality to every piece.

In *True North*, *Bone Needle*, and *Prairie*, the history of settlement and human habitation is evoked.

White offers a symbolic, iconic tribute. Made from barn siding and the rails of a porch swing, it memorializes a way of life too-quickly vanishing from view.

In one way or another, all artists lose themselves in their mediums.

-
- "Materials Matter" continues through Oct. 3 in Art Access Gallery, 540 S. Drexel Ave., Bexley. Hours: 11 a.m. to 5 p.m. Tuesdays through Fridays, 11 a.m. to 4 p.m. Saturdays. Call 614-338-8325 or visit www.artaccessgallery.com.
Email

Ads by Yahoo!

Transportation Software
Transportation and Logistics software including accounting
(omni-info.com)

Is He Cheating On You?
1) Enter His Email Address 2) See Facebook, Hidden Profiles & More!
(Spokeo.com/Find-Cheaters)

Wanna Win MegaMillion?
How Do People Win? Find Out How Some Folks Can Do This Consistently.
(www.getluckynumbers.info/con/1.0)

Be A MegaMillion Winner
This Is The February Surprise The Lotteriers Are Trying To Avoid...
(www.secretmasterformula.com/cn/1.1)

