

PHILLIPS



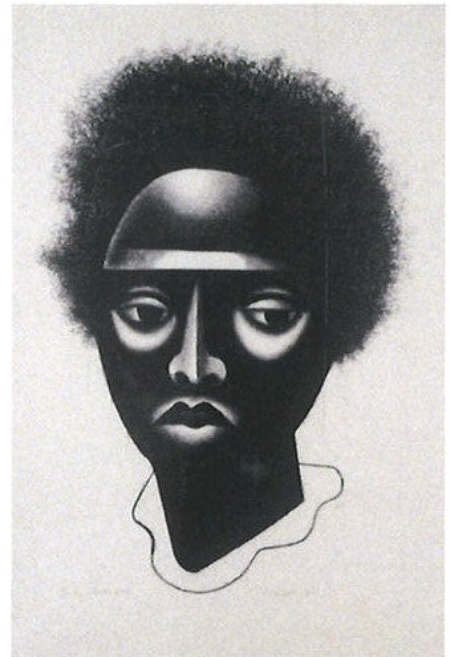
The Phillips Collection
MEMBER MAGAZINE | SUMMER 2024

EXHIBITIONS AT THE PHILLIPS COLLECTION

Where We Meet: Selections from the Howard University Gallery of Art and The Phillips Collection

April 5-August 15, 2024

Where We Meet brings works from the collections of the Howard University Gallery of Art and The Phillips Collection into conversation. The selections reflect a continuum of artistic dialogue between two storied Washington, DC, institutions that has endured for almost a century. Featured in this installation are works by artists acquired early in the life of both institutions, including Howard University professors Lois Mailou Jones and James Lesesne Wells, as well as works by seminal artists from each collection. This presentation reflects the overlapping histories of the Phillips and Howard, revealing an early and evolving relationship developed through a common interest in collecting, stewardship, and providing access to art.



Elizabeth Catlett, *Black Girl*, 2004, Lithograph, Howard University Gallery of Art, The Ronald W. and Patricia Turner Walters Collection

Organized in conjunction with the 34th Annual James A. Porter Colloquium on African American Art & Art of the African Diaspora

Gallery Talk: Dive into the Collection

June 14, 12 pm

Assistant Curator Camille Brown and the Howard University Gallery of Art discuss *Where We Meet* in the Phillips's Library & Archives. Browse a special archival display that outlines the historical connection between the Phillips and Howard. *Included in the cost of admissions. Reservation required*

PHILLIPS
The Phillips Collection

PLAN YOUR VISIT TODAY

PhillipsCollection.org

Tuesday-Sunday, 10 am-5 pm

Multiplicity: Blackness in Contemporary American Collage

July 6–September 22, 2024

Multiplicity is the first large-scale exhibition dedicated to exploring collage by contemporary Black American artists. Featuring over 45 artists, this exhibition celebrates the broad variety and complexity of Black identity in art. Created with pieces of paper, photographs, fabrics, and/or other salvaged materials, the bold compositions offer poignant expressions of human experience.

Artist Units at The Phillips Collection

November 2–January 19, 2025

Duncan and Marjorie Phillips wanted to test new approaches to exhibiting and collecting art. They acquired groups of works that surveyed an artist's career, providing support for artists they admired in the form of acquisitions, exhibitions, and stipends. This exhibition looks at the stories between patron and artist and showcases how more recent units continue to shape the museum.

Timeless Mucha: The Magic of Line

February 22–May 18, 2025

This exhibition reappraises the graphic work of Alphonse Mucha (1860–1939) and explores his influence on graphic art since the 1960s. Featuring 100 works, this exhibition surveys the development of Mucha's style, which evolved to be synonymous with Art Nouveau, was rediscovered in Psychedelic Art of the 1960s–70s, and today is connected to American comics, Japanese manga, and public murals.

Essex Hemphill: Take care of your blessings

May 10–August 29, 2025

This exhibition charts the intertextual relationship between the writings of poet and activist Essex Hemphill (April 16, 1957–November 4, 1995) and contemporary visual art. Born in Chicago and raised in DC, Hemphill emerged as a luminary in the DC arts scene in the 80s and 90s. He self-published chapbooks including *Earth Life* (1985) and *Conditions* (1986), before publishing his full-length collection *Ceremonies: Prose and Poetry* (1992). While Hemphill died of AIDS-related illness at just 38, his work persists, reflected in visual dialogues with his contemporaries and inheritors.

Vivian Browne: My Kind of Protest

June 28–September 14, 2025

This exhibition focuses on the depth and variety of the more than three-decade career of Vivian Browne (1929–1993), seen through seven bodies of work alongside ephemera from Browne's enduring activist and teaching work. Browne's signature approach to color and form—informed by what she describes as “emotional landscape(s)” —embody the artist's unique contribution to 20th-century American art.



SYLVIA SNOWDEN

(b. 1942, Raleigh, NC; active in Washington, DC)
George Chavis, 1984
 Acrylic and oil pastel on Masonite
 49 1/2 x 49 1/2 in.
 The Dreier Fund for Acquisitions, 2024

George Chavis is the first work by Sylvia Snowden to enter the collection.

Sylvia Snowden is an internationally renowned artist based in Washington, DC. Her six-decade-long career includes teaching positions at Howard, Yale, and Cornell Universities, as well as exhibitions at the National Gallery of Art, National Museum of Women in the Arts, and Baltimore Museum of Art. Snowden earned a BFA and an MFA from Howard University. Recent attention in the US and abroad has placed her among the most important painters to have emerged in the past 50 years. Her art is expressionistic, fierce, and in almost any scale has a monumental sensibility.



“The Phillips Collection was delighted to honor the incredible Sylvia Snowden at the 2024 Annual Gala. In the longstanding and growing tradition of expressionist painting, she is in conversation with artists at the Phillips with comparable expressive, gestural sensibilities, such as Karel Appel, Chaïm Soutine, Willem de Kooning, and several others who have also shared DC as a home, such as Joyce Wellman, Lou Stovall, and Sam Gilliam.” *Jonathan P. Binstock, Vradenburg Director & CEO*

HUNG LIU

(b. Changchun, China, 1948; d. Oakland, CA, 2021)
Refugee: Woman and Children, 2000, Oil on canvas, 80 x 120 in.
 Gift of Joan and Roger Mann



Refugee: Woman and Children is the first work by Hung Liu to enter the collection.

Hung Liu came of age under the communist regime of Mao Zedong. In her early 20s, Liu labored for four years in fields as part of Mao’s Cultural Revolution. She began her formal training in China in the 1970s, then, after emigrating to the US in 1984, began a decades-long teaching career. Liu is known for her large-scale paintings of women, courtesans, refugees, children, and laborers from pre-revolutionary China. Often working from faded black-and-white photographs, she transformed images of once anonymous figures into intimate and deeply empathetic portraits. *Refugee: Woman and Children* is representative of this body of work. The painting enhances the museum’s holdings of works that tell the story of displacement, such as Jacob Lawrence’s *Migration Series* and Benny Andrews’s *Trail of Tears*.



The Phillips Collection

Nonprofit Org
US Postage
PAID
Merrifield, VA
Permit No. 2333

3548

*****AUTO**SCH 5-DIGIT 20010

Ms. Joyce Wellman
3601 11th St NW
Washington, DC 20010-1406



COMING SOON

Breaking It Down: Conversations from the Vault

November 2, 2024-January 19, 2025

From its inception, The Phillips Collection has focused on creating what founder Duncan Phillips called “units”: groups of artworks that represent key aspects of an artist’s vision or spirit. Leaders in championing the independent-minded artist, Duncan and Marjorie Phillips gave many of these artists their first museum shows and acquired their works. This exhibition offers a deep dive and new take on several artists who are cornerstones of the collection, including Georges Braque, Richard Diebenkorn, Arthur Dove, Sam Gilliam, Paul Klee, and Georgia O’Keeffe, alongside a growing collection of works by trailblazers of our time, such as Sean Scully, Sylvia Snowden, Renée Stout, Joyce Wellman, and more.

This exhibition is organized by The Phillips Collection.

Join us for Member Preview Days on
October 31 & November 1

For information about how you can support this exhibition and sponsorship benefits, contact the Advancement Office at 202.387.2151 x229 or advancement@phillipscollection.org.

Joyce Wellman, *The Big 5*, 2005, Acrylic and mixed media on canvas, 72 x 60 in; The Phillips Collection, Gift of the artist, 2022

CONTACT US

For general inquiries, call 202.387.2151. Contact the Membership Office with questions about benefits or your membership at 202.387.3036 or membership@phillipscollection.org.

SUPPORT US

Contact the Advancement Office with questions about how you can support the museum while enhancing your experience at 202.387.2151 x229 or advancement@phillipscollection.org.

VISIT US

The Phillips Collection is open Tuesday-Sunday, 10 am-5 pm. Visit PhillipsCollection.org/visit for more information.

PhillipsCollection.org