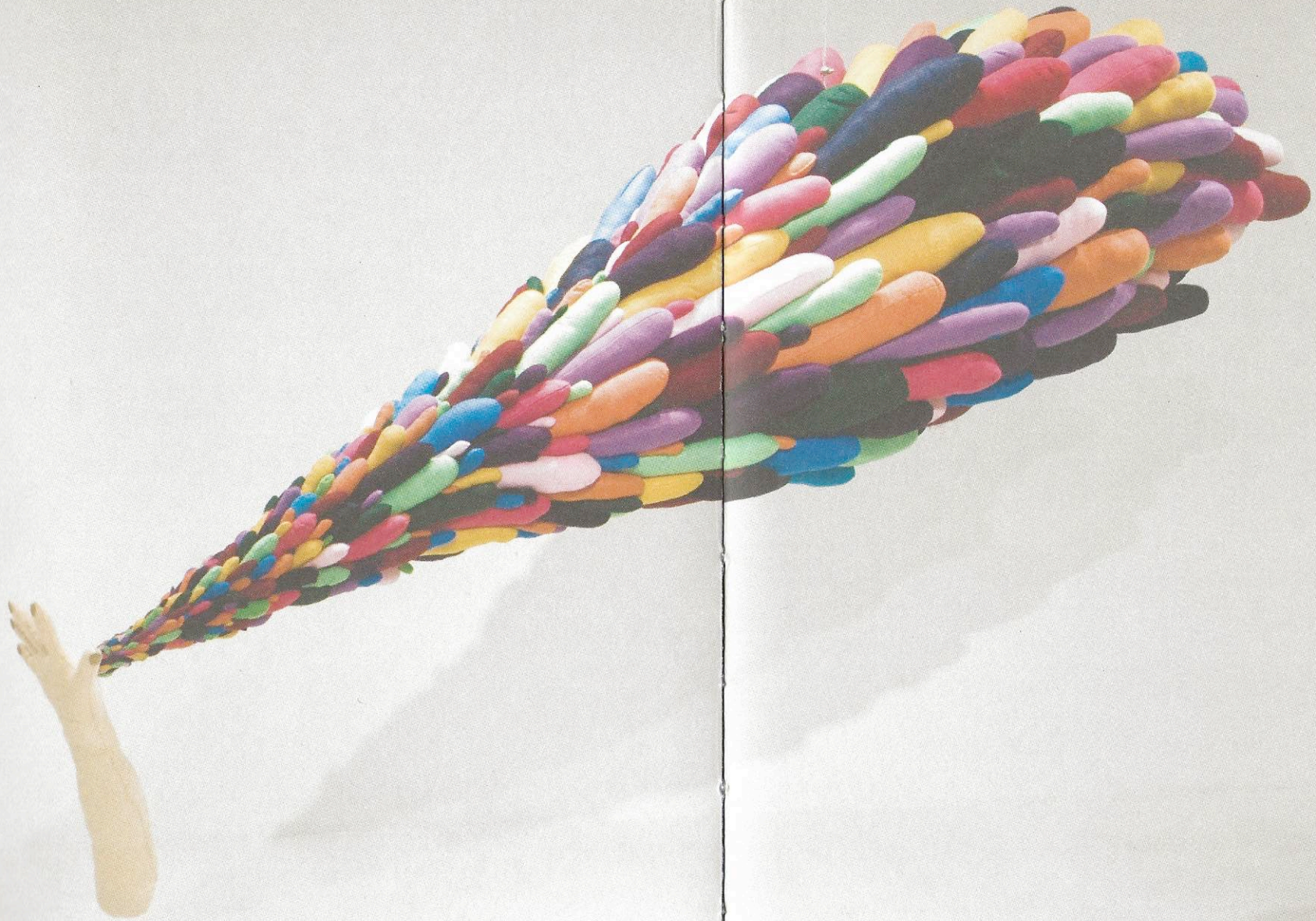


THREE

- pg.09 Richard Höglund
pg.21 Charley Friedman
pg.33 Rachel Perry Welty
pg.45 Sarah Conaway
pg.57 Graham Hudson
pg.69 Christy Gast
pg.81 JJ Peet
pg.93 Fabienne Lasserre
pg.105 Abby Manock
pg.117 Daniel Milewski



EVERYTHING

IS

GOING

TO

BE

OKAY



Charley Friedman Image Captions:

pg.25

Big Red Ball 2010
Size variant on room
As shown 9' diameter

pg.26-27

Grapefruit Piece As Adenoid (Performance still) 2000

pg.29

Untitled,
Graphite on paper,
21" x 27"

pg.30-31

Magic Powers 2009
Mixed media sculpture
90" x 29" x 23"

Charley Friedman

Charley Friedman graduated with an MFA from The School of the Museum Arts Boston in 1996, after which he relocated to New York City where he continues to live and work. Institutions including, The Pollack-Krasner Foundation Grant, Bemis Center for Contemporary Arts, and the Rema Hort Mann organization (which he has been a two time nominee) have recognized Mr. Friedman's work with grants and residencies. His work has been exhibited in solo exhibitions at The Joslyn Museum of Art in Nebraska, The Queens Museum in New York, White Columns in New York, and numerous other galleries and non for profit spaces. His performance pieces have been enacted at PS1/MOMA, Exit Art, Cooper Union, The Soap Factory, Jack Tilton Gallery, and numerous other institutions, commercial galleries, and exhibition spaces. His works are in the permanent collections of The Museum of Modern Art, The Museum, The New York Public Library, and Amherst College. Charley is represented by Gallery Diet where to date he has had two solo exhibitions.

Grapefruit Piece

Charley serandes and rythmically eats a grapefruit to the pulsing beat of Led Zeppelin while dressed as the character, Adenoid.

