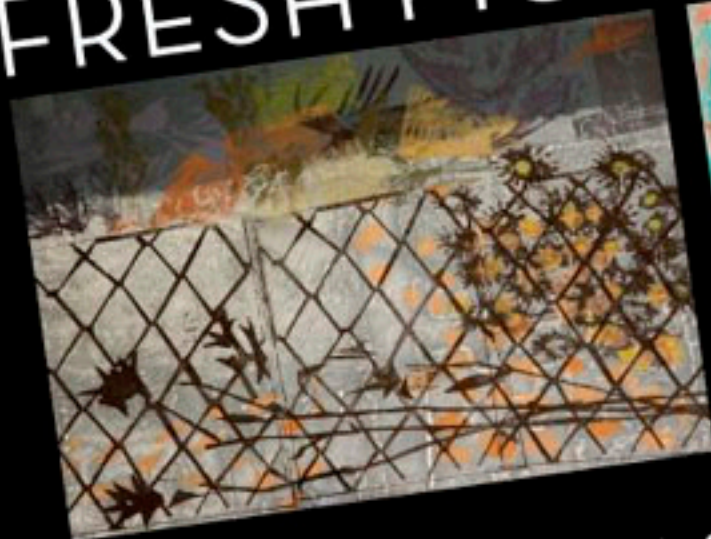


FRESH PICS

CURATED BY CAMILLA COOK

FRESH PICS

CONTEMPORARY ART IN CONNECTICUT



CURATED BY CAMILLA COOK

FRESH PICS

CONTEMPORARY ART IN CONNECTICUT

CURATED BY CAMILLA COOK

FRESH PICS Book Copyright 2010 by Camilla Cook

Each artwork included in this exhibition is copyright protected
by the artist who created it.

Front Cover - 1. Antonio Frasconi - Norwalk Winter
2. Christine Aaron - Russet Dawn
3. Paul Harvey - Passage

Book Design - www.customartistbooks.com

CURATOR'S STATEMENT

When the Ridgefield Guild of Artists (RGA) invited me to curate an exhibition of my clients' artwork, I was delighted to partner with an organization that shares with me a commitment to local and regional artists.

As the show's host, the RGA casts an elegant and esteemed light upon the talented artists with whom I collaborate. Through my career, I have grown to know the artists on exhibit, learning about their sources of inspiration, backgrounds, techniques and processes. Their work inspires me and their commitment to their craft impresses me. As an artist consultant, I have been fortunate to be in a position to assist them in small ways over the years.

FRESH PICS: Contemporary Art in Connecticut is a showcase of over 50 contemporary artists whose creative visions are crafted and realized right here in Connecticut (and its environs). The show represents a balanced survey of new works by emerging, mid-career and world-renowned artists. Several pieces are making their public debut in this show!

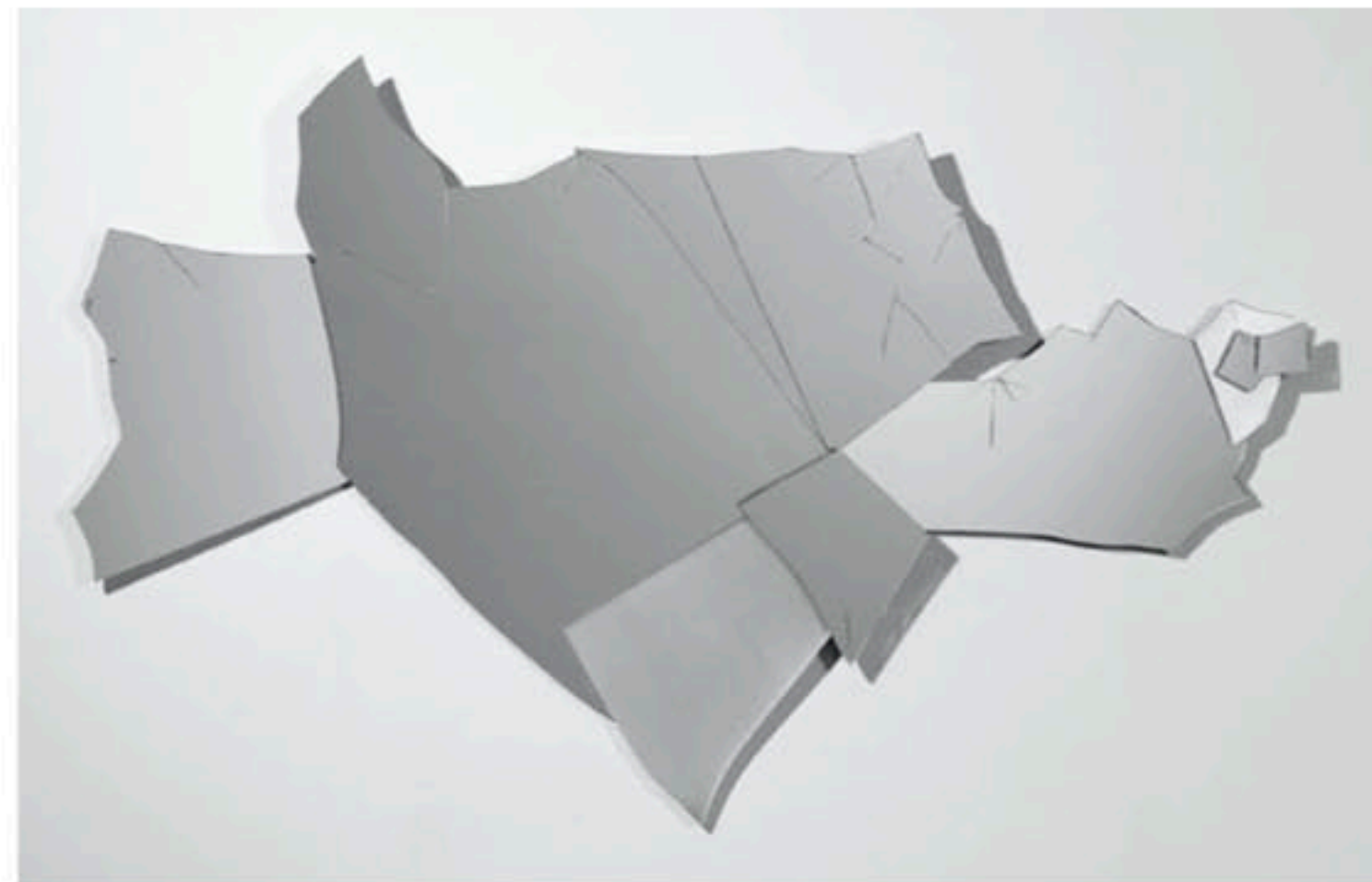
It was a thrill to select images by so many noteworthy artists. I find the works compelling and thoughtful while covering a variety of media including painting, drawing, photography, sculpture and printmaking.

I am grateful and honored for the unique opportunity to spotlight a piece of this region's rich and vibrant cultural scene.

CAMILLA COOK
January 2010



Christine Aaron - *Russet Dawn*
mixed media and encaustic on copper - 18x18"



June Ahrens - *Out of Nowhere*
mirrors and sanded mirrors - 22x35x.5"



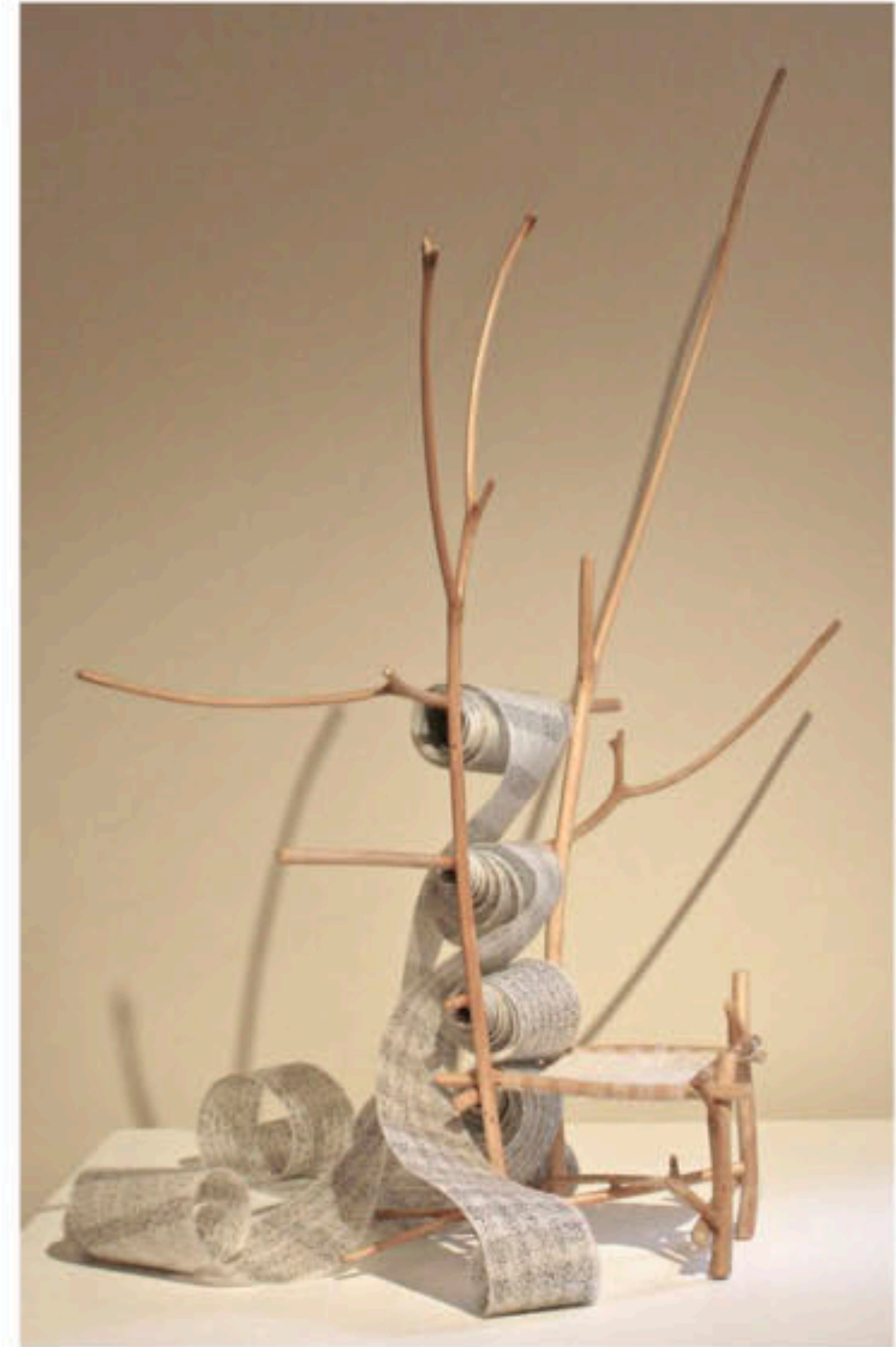
Corina S. Alvarezdelugo - *Spikey*
stoneware - 11.5x17x11.5"



Cynthia Atwood - *Temptation*
rubber, wire, fabric, paint - 14x7.5"



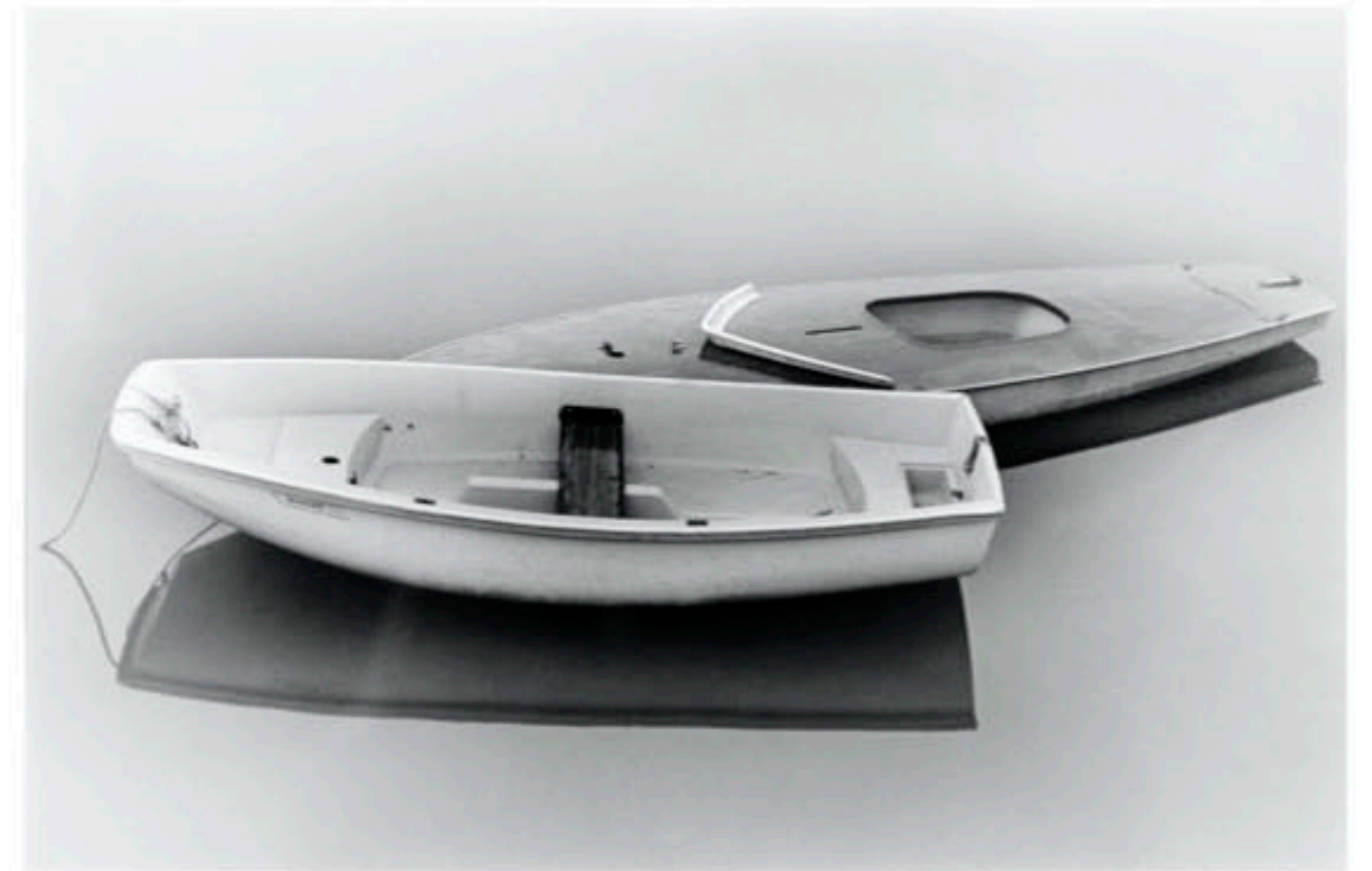
Donald Axleroad - *Gryphon*
woodcut - 18x27"



Karin Bartimore - *The Scribe's Chair*
mixed media - 20x22x7"



Binnie Birstein - *Savior*
encaustic - 18x18"



Irwin Block - *The Couple*
photograph - 16x20"



Jennifer Contini Enderby - *Round Hill Rd*
acrylic and mixed media on canvas - 19x25"



Christopher Curnan - *White Roses and Honey*
mixed media - 48x48"



Roxanne Faber Savage - *Your Turn Windbag*
paper lithograph - 22x40"



Alanna Fagan - *35, rue Vaneau*
oil on canvas - 32x42"



Jim Felice - *Factory Town*
steel - 17.5x11.5x11"



Cecilia Fradet - *Night Mantra 2*
oil monotype - 15.5x15.5"



Antonio Frasconi - *Obama*
woodcut - 14.5x21"



Antonio Frasconi - *Norwalk Winter*
woodcut - 21x14.5"



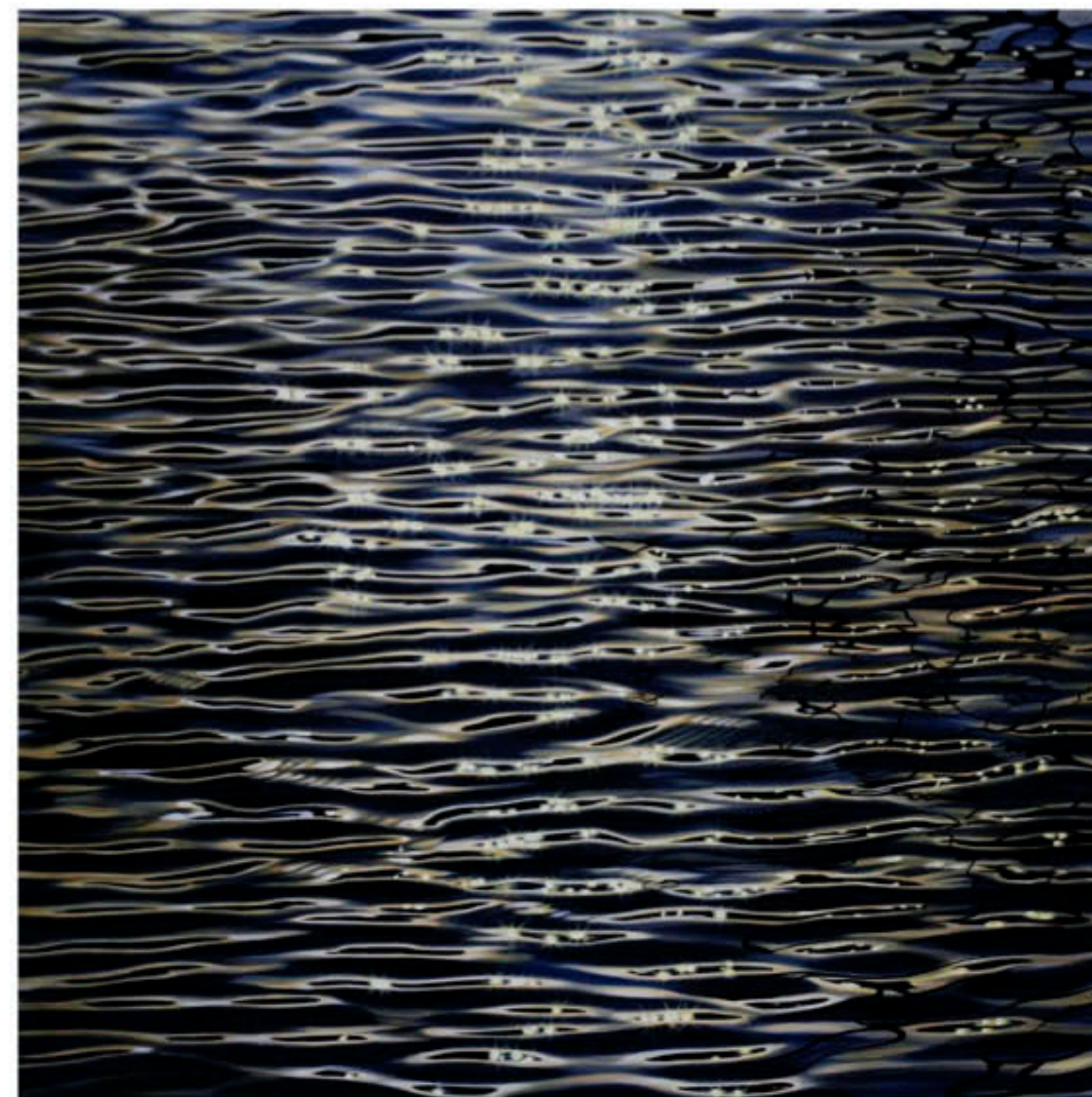
Ernest Garthwaite - *Spirit Enclosures*
copper pencil drawing - 15x22"



Lori Glavin - *Untitled (Orange and Grey)*
monotype - 30x22"



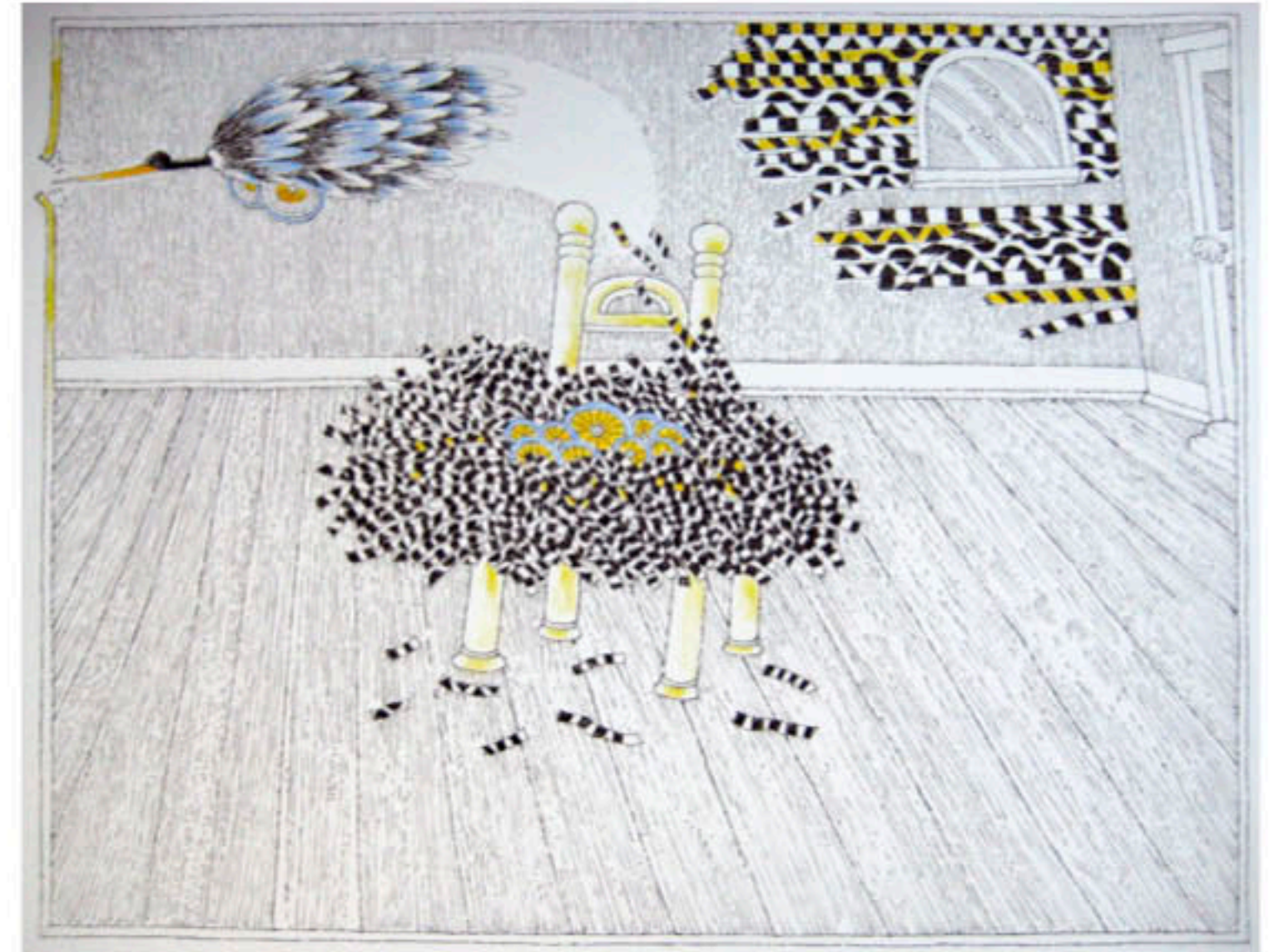
Rima Grad - *Estelle Curve*
collage with drawing on paper - 15x8.5"



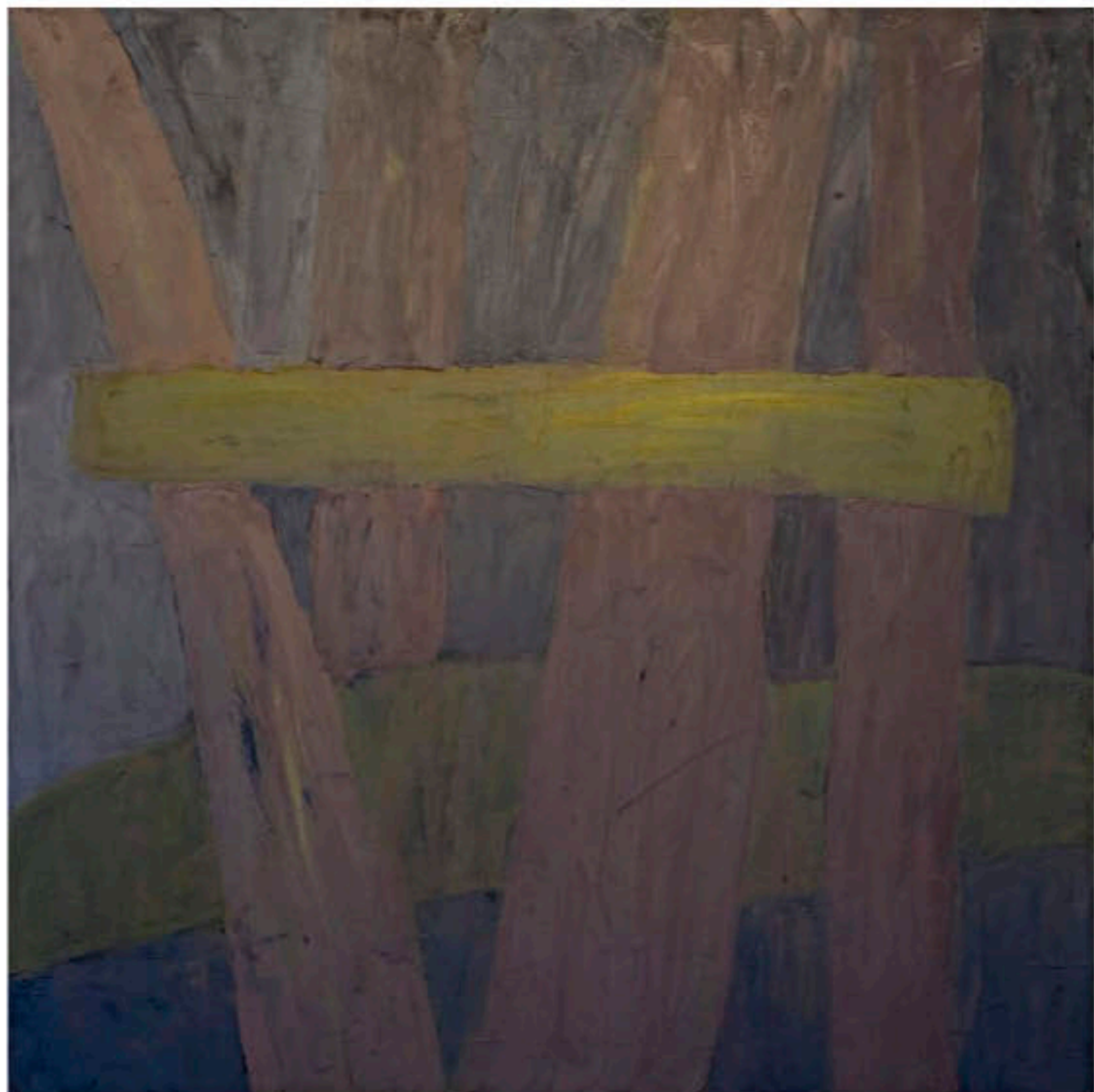
John Harris - *Cosmorama*
oil on linen - 52x48"



Paul Harvey - *Passage*
ink on paper - 14x17"



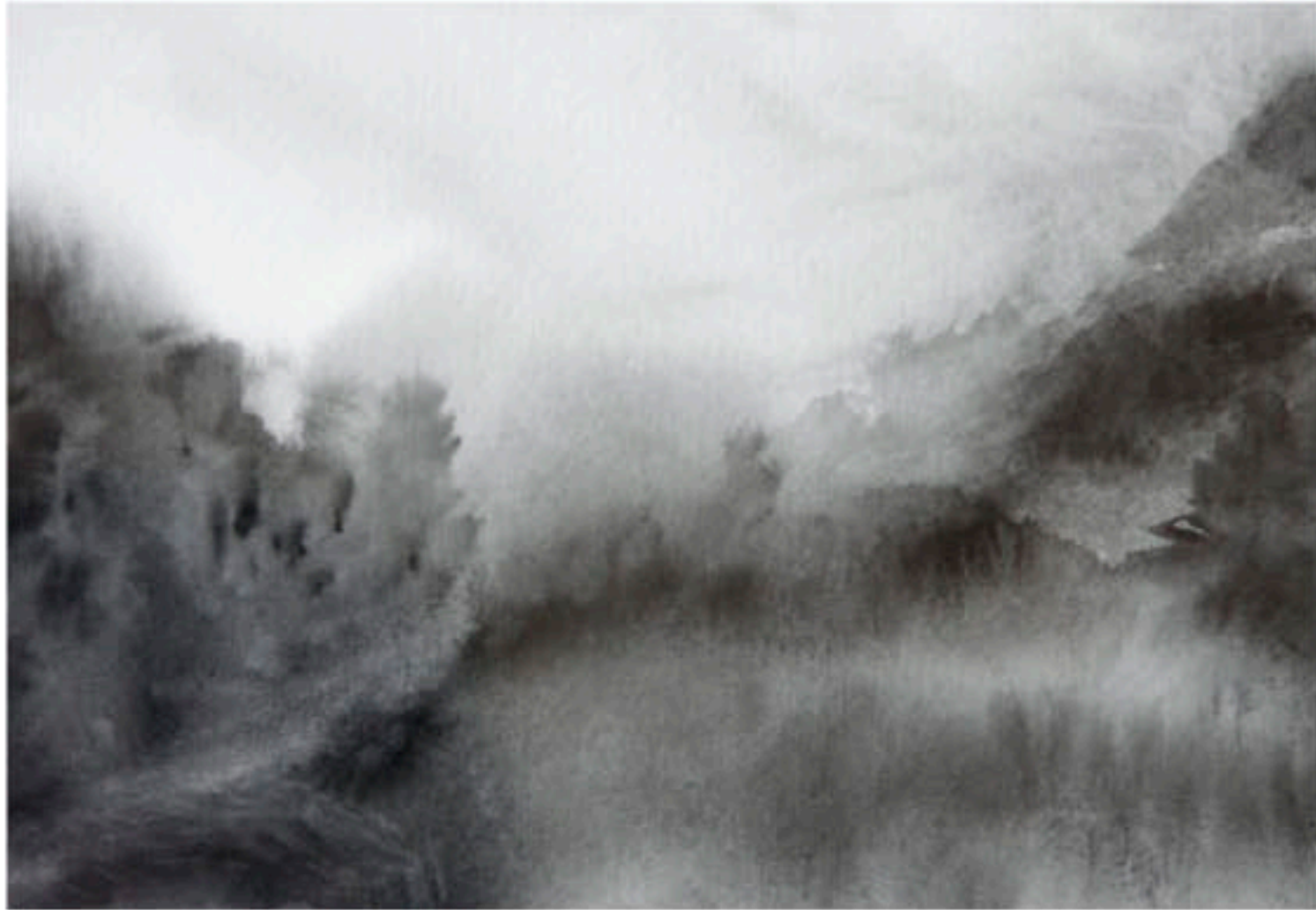
Paul Harvey - *Shardbird*
ink on paper - 14x17"



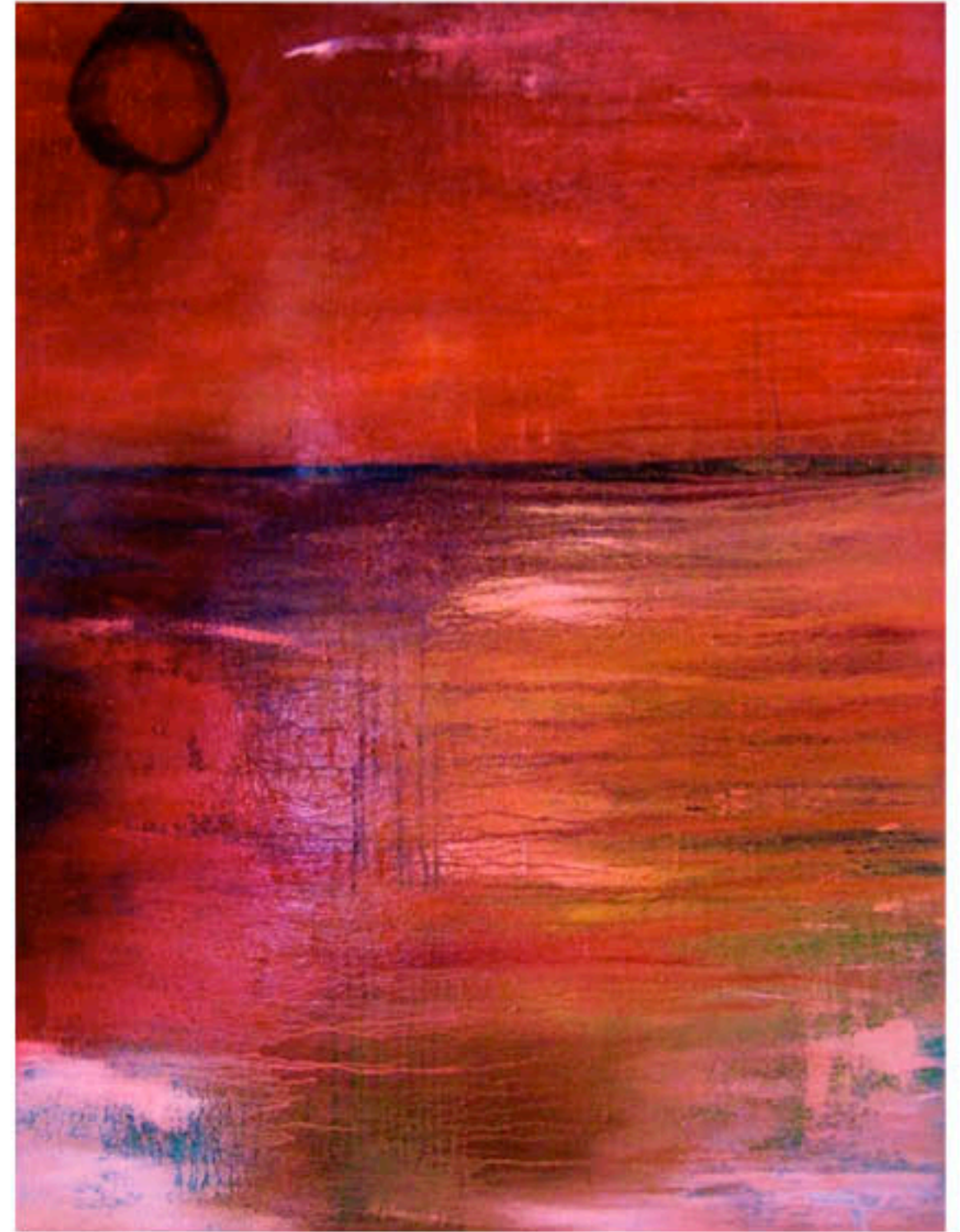
Lou Hicks - *Dusk*
oil and wax on canvas - 46x46"



Ann Hodgdon-Cyr - *Man/wo-man*
silver gelatin lith print - 8x9"



Jane Ingram - *Abstract Landscape 53*
gouache - 4.5x6.5"



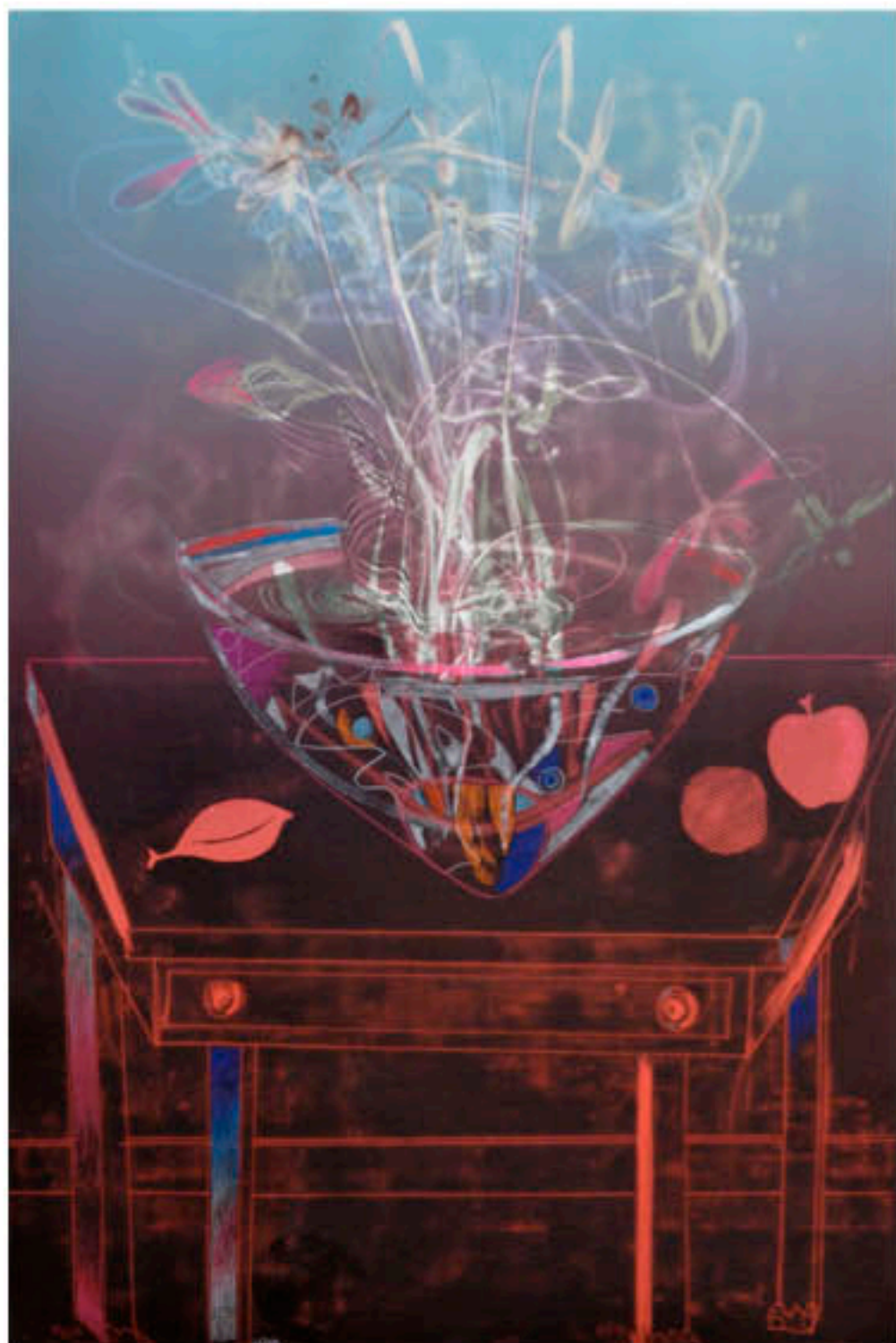
Nancy Jaffe - *Abstract in Orange*
oil on canvas - 30x40"



Stephanie Joyce - *On the Riverbank*
mixed media - 16x36"



Marty Kremer - *Faulty Towers*
glass - 42" high (base 19x19x2")



Nancy Lasar - *Shaker Table with Red Leaf*
monotype - 44x30"



Cate Leach - *Orestes #1*
acrylic, collage and ink - 6x8"



Connie Manna - *Vertigo*
acrylic and oil on canvas - 13x15"



Michael Manning - *Angel Face*
acrylic and oil stick on canvas - 40x48"



Susan Manspeizer - *Spirit*
bent cane wood, paint - 52x9x11"



Nancy McTague-Stock - *Private View*
photograph - 34x22"



George Megrue - *Bather*
wood - 4x5x27"



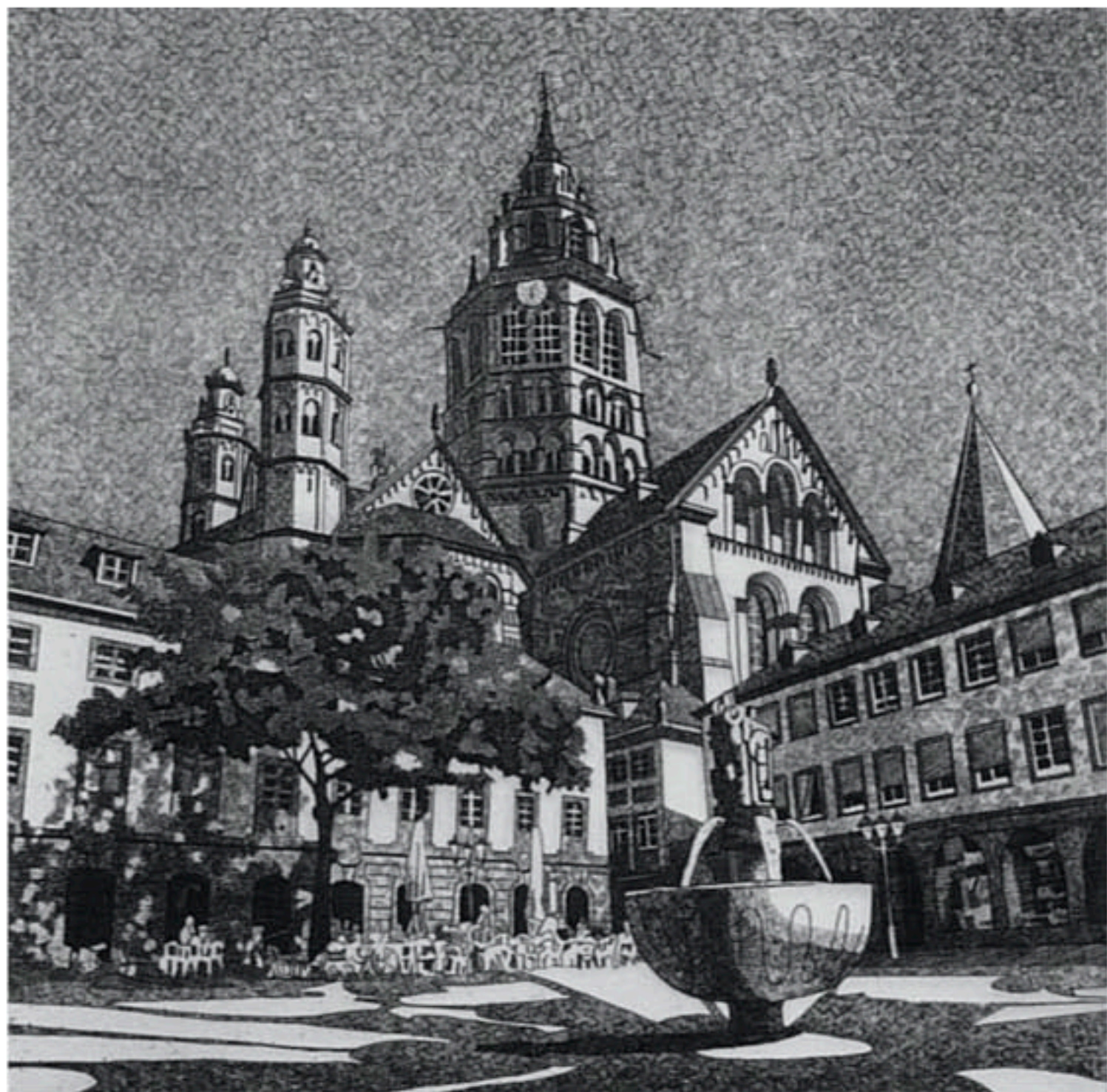
Liana Moonie - *Feelings of Nature, Haiku Series 43*
oil on canvas - 36x36"



Susan Newbold - *Red Tide*
mixed media - 22x30"



Carey Parks Schwartz - *La Remigeasse*
acrylic on canvas - 24x24"



DeAnn Prosia - *1000 Year Old Mainzer Dom*
line etching - 6x6"



DeAnn Prosia - *Capri Harbor*
line etching - 4x6"



Steven P. Perkins - *Saraburi*
acrylic, rubber stamp ink on handmade paper on canvas - 48.5x39.5"



Nancy Reinker - *Branches*
ink on canvas - 20x16"



Gay Schempp - *The Temptation of Eve*
mixed media - 12x14"



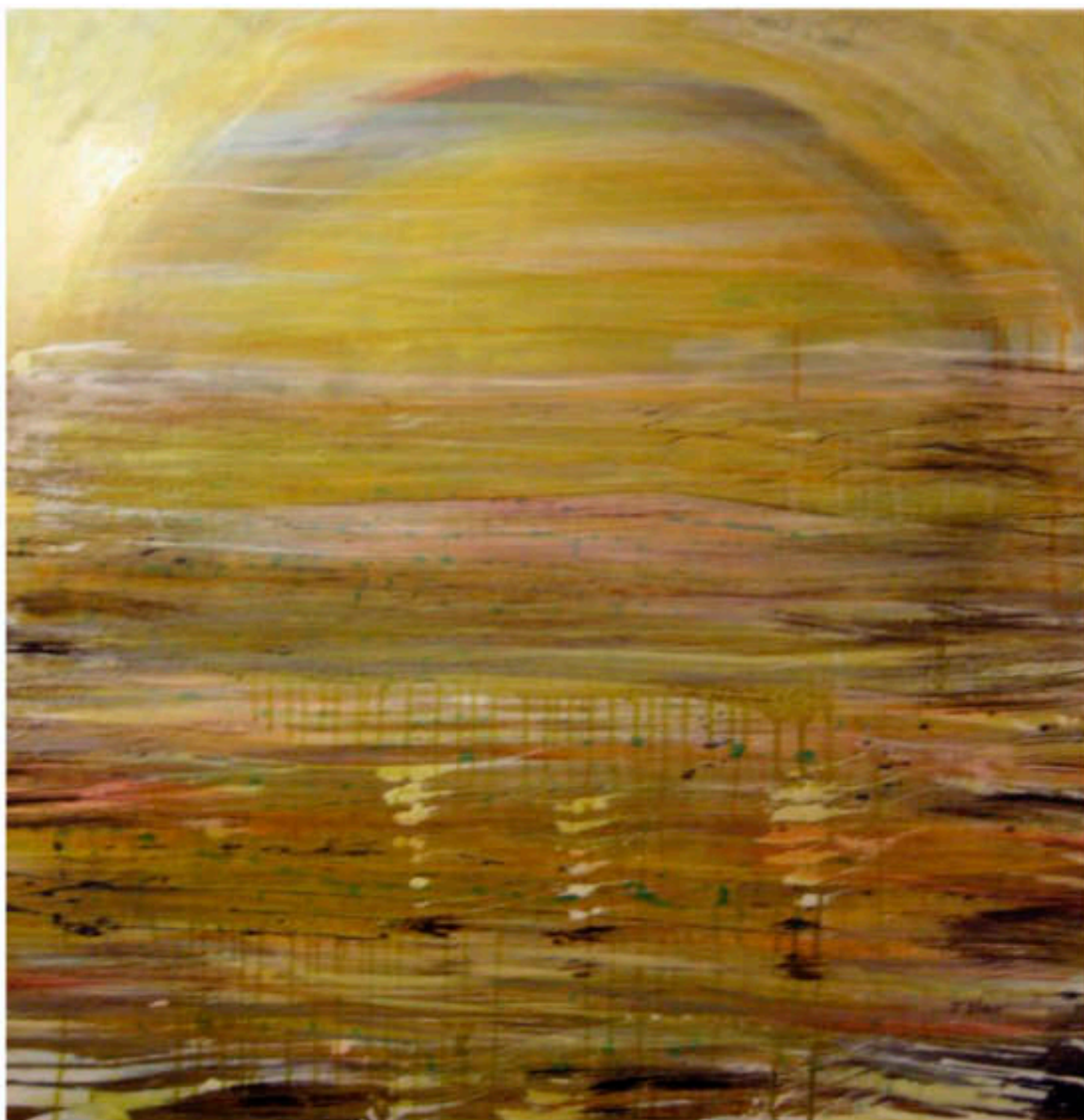
Alan Shulik - *Into Cypresses*
carbon pigment photograph - 14x14"



Nomi Silverman - *Box Study*
mixed media drawing - 60x36"



Arle Sklar-Weinstein - *Osaka Castle*
fiber-photomontage - 39x31.25"



Janet Slom - *Circle of Life within Heaven on Earth*
mixed media on canvas - 30x30"



Karen Sorensen - *The Cardinal Desire*
monotype - 22x30"



Judith Steinberg - *Wired*
mixed media - 33x33x14"



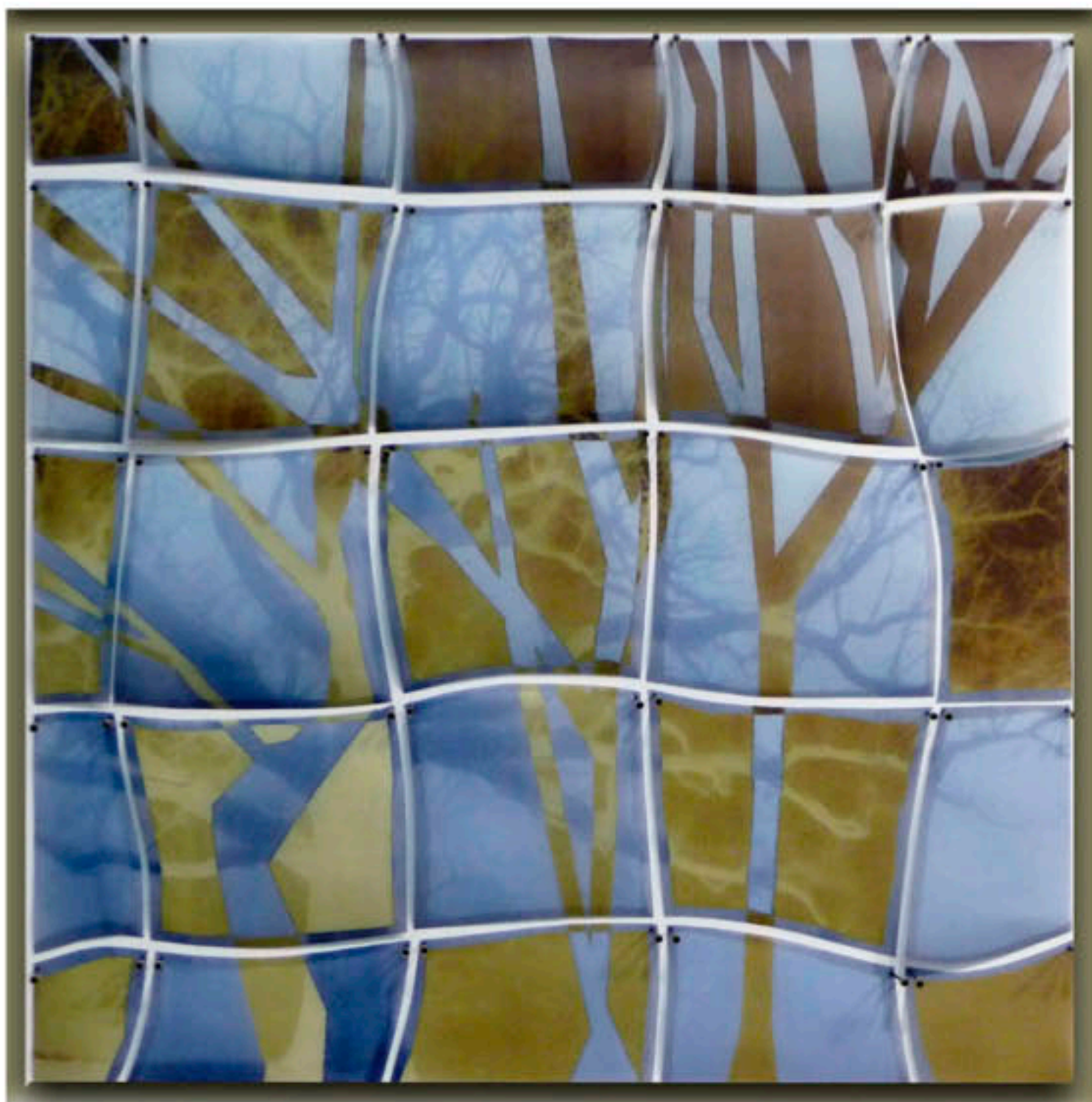
Jodiann Strmiska - *Tumble Bunny*
graphite on paper - 39x108"



Florence Suerig - *Bloom 2*
porcelain paper clay - 28x18x24"



Jane Sutherland - *Little Dancer*
charcoal on paper - 42x30"



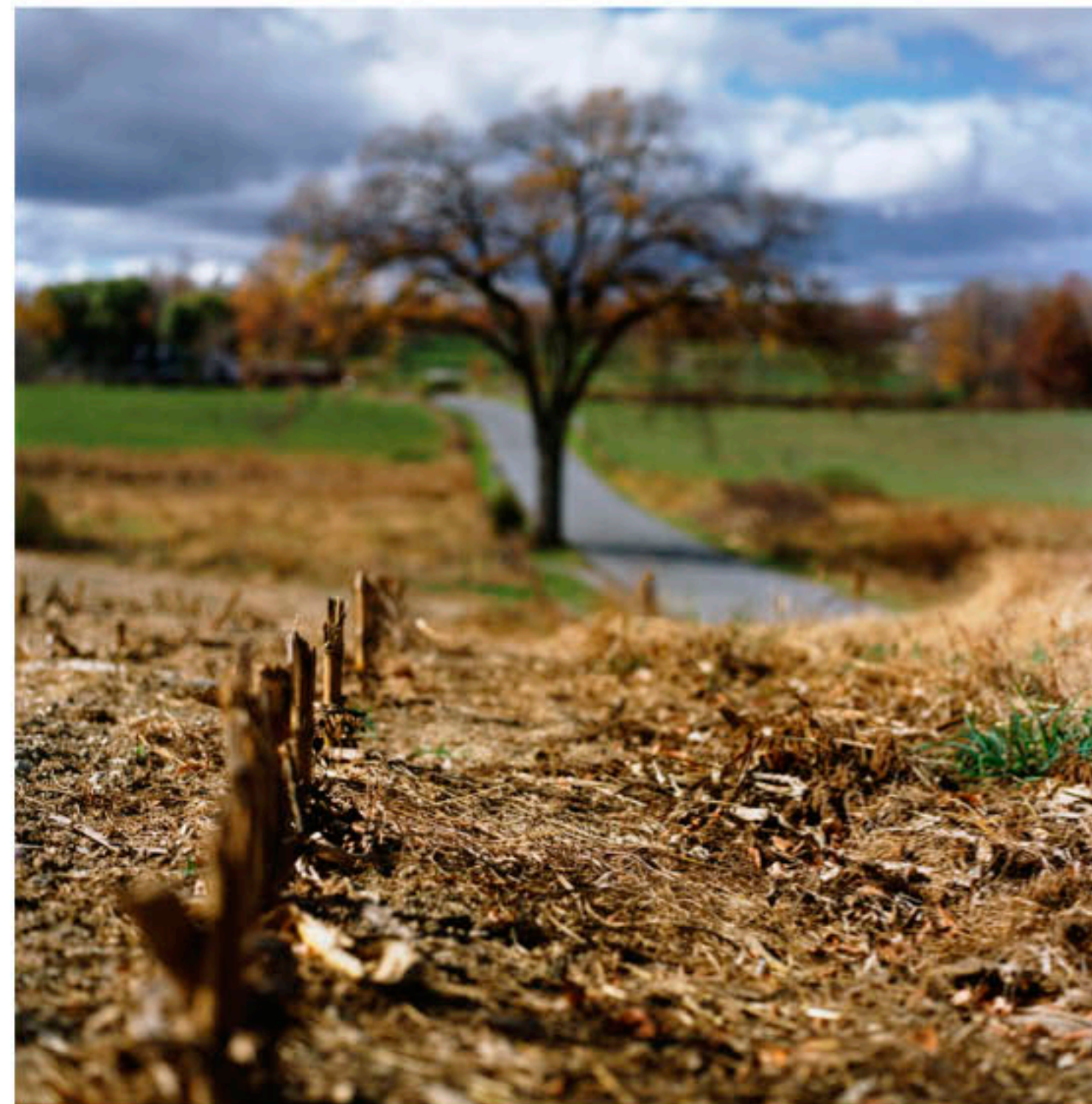
Jo Ubogy - *Chilly Scenes of Winter*
digital mixed media - 24x24x2"



Derek Uhlman - *Critter in Silver and Green*
mixed media - 20x66x36"



Peggy Weis - *Giant Black Amulet*
monoprint with chine colle - 22x30"



Torrance York - *N41°46.557' W073°50.863' 10/27/01 441ft.,
(Harvested)* edition 2/10, 2005 - photograph - 28x28"



camilla
cook

About Camilla Cook

An independent artist consultant and a committed champion of the arts, Camilla serves as a resource and advocate for over 60 artists in Connecticut and beyond.

In addition to working closely with her artist clients, Camilla has directed, originated, curated and/or contributed to programs at The Aldrich Contemporary Art Museum, Silvermine Guild Arts Center, The Westport Arts Center and The Neuberger Museum of Art.

Camilla received her B.A. from Boston University and an M.A. in Modern and Contemporary Art History from SUNY Purchase.

More information is available at
www.camillacook.com.

camilla
cook

ARTIST CONSULTANT
CAMILLA@CAMILLACOOK.COM
WWW.CAMILLACOOK.COM
203-895-4089

RIDGEFIELD
GUILD
OF ARTISTS



About the Ridgefield Guild of Artists

The Ridgefield Guild of Artists is a regional and community based art organization that promotes the visual arts and arts education by providing high quality gallery space for exhibitions, art classes for children and adults, opportunities for artist-in-residency programs, and art lectures on-site and in collaboration with other cultural organizations.

More information is available at
www.rgoa.org.

RIDGEFIELD
GUILD
OF ARTISTS



Ridgefield Guild of Artists
34 Halpin Lane
P.O. Box 552
Ridgefield, CT 06877
203-438-8863
www.rgoa.org