

LIV METTE LARSEN

Concrete Factory Slemmestad Fabrikker





## Themselves Productive: New Paintings by Liv Mette Larsen

by Paul D'Agostino

The more you become acquainted with the foundational forms and material underpinnings of Liv Mette Larsen's works, the more you come to realize the generally uninterrupted extent to which they are all procedurally interlinked, conceptually interconnected, holistically and harmoniously cross-informed. The nature of this realization is perhaps ultimately the most abstract product of Larsen's hand-pedaled factory-like process that is itself generative, manually fabricational, iteratively productive.

One should not mistake any of the above as a suggestion that this now Brooklyn-based painter—Norwegian born, then eventually NYC-bound by way of a period of teaching and artistic activity in Germany—presents her viewers with compositions full of visual convolution, nor that her pictorial processes and products register as even remotely mechanical. On the contrary, Larsen's essentially representationally-driven forms are dimensionally simplified distillations of at times complex, at times relatively basic structures that stand as variably recognizable markers of place—localized neighborhood skylines, for instance, or readily distinguishable factories, as is the case in her recent *Concrete Factory Slemmestad Fabrikker* series. Working from photographs or observation, Larsen breaks up, breaks down and flattens her chosen structures' aspects and facets into a series of characteristic shapes, then carries them into so many lightly, almost happily handled compositional arrangements that serve as her platform to explore the chromatic richness and occasional quirks of her long-standing materials of choice—egg tempera on linen treated with rabbit skin glue.

Larsen's largely earth-tone colors run a full yet quiescent range. She's not shy at all about employing purples, yellows, oranges and greens to depict objects that might actually be just grey, in other words, but not even the brightest reaches of her palette shout or cry out. Rather, her colors murmur and hum like the low din of machinery, or like a calm flow of traffic



Above: Concrete Factory Extended II, 2016, egg tempera on linen, 40x60 in

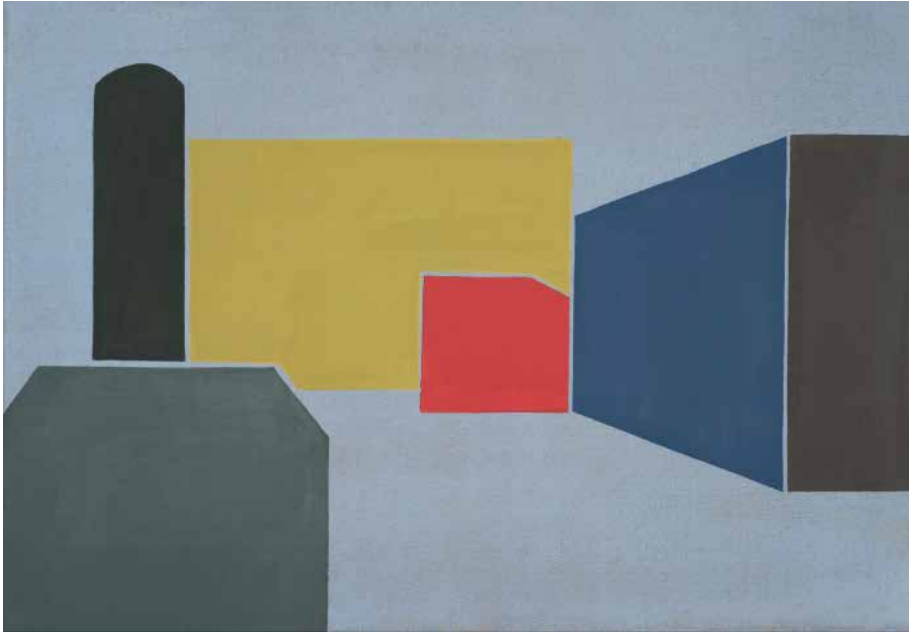
Left: Concrete Factory Extended II, 2016, egg tempera on linen, 40x60 in

along an urban block, maintaining nonetheless all the chromatic lushness and toothsome textures of the powdered pigments and egg mediums she uses to mix them into life. Backgrounds are sometimes the areas where Larsen allows colors to visually intermingle and bleed through one another, especially in her larger works. Consequently, her montages of middle- and foregrounded forms, often filled in with more uniformly viscous admixtures, begin to come across as depth-creating, footprint-stamping, colorful shadow puppet-like characters—a troupe of implicitly post-industrial, meta-structural actors playing stop-motion roles of form-holders, chroma-bearers and spatial dwellers on some outdoor stage on a forsaken, extra-urban stretch of land, on a fall or spring afternoon in which mild temperatures and overcast skies cooperate to make the setting that much simpler to enthuse.

In Larsen's creative landscape, some of the forms, colors, compositions and 'characters' she develops will then reemerge in kindred bodies of work. Shapes appear in different proportions in other paintings and collages; collages take color cues from paintings and watercolors; watercolors and collages inform compositional and chromatic choices in paintings. And of course, Larsen keeps an ever-sharp eye on how subtle shifts or surprises in one productive mode might lead her to insights in another. All this from regarding very closely and formally dismantling a building or two, then turning constituent parts into inputs for serialized processes made manifest in interconnectedly generative ways. A landmark *fabrikk* in Norway, as it were, becomes a manufacturer and remanufacturer of itself. And Larsen's creative factory just keeps on humming. The characters in her plays keep doing their happy thing.

*Paul D'Agostino, Ph.D. is an artist, writer, curator and professor living in Bushwick, Brooklyn*





Concrete Factory IX, 2015, egg tempera on linen, 17x24 in





Above: Concrete Factory IX, 2015, egg tempera on linen, 17 x 24 inches

Right: Concrete Factory IX, 2015, egg tempera on linen, 17 x 24 inches





## Bilder av et industriminnesmerke

Stedsnavnet **Slemmestad** kommer fra Slim, en bekk som nå heter Bøbekken, et ord for slam og dynn, etter kalkstein som ligger i jordsmonnet. Bekken renner ut i fjorden, sørvest for Oslo, ikke langt fra der Liv Mette vokste opp. Christiania Portland Cementfabrik, nedlagt i 1989 etter hundreoggett års drift, ligger ved fjorden.

Bygningene vitner om arbeid, om stor produksjon og slit. Fabrikken var den første sementfabrikken i Norge, med stor betydning for arbeiderbevegelsen. Området som gjenstår, den ene pipa har fått stå, er et landemerke.

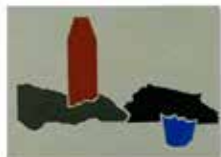
Liv Mette som er oppvokst i **Asker**, et landbruksområde, viser bilder av sementindustri, noe vi forbinder med støv, gråhet. Hun var ved den nedlagte fabrikken på den lyseste dagen, St. Hans-natta som feires med bål. Fargene er satte, mettede, våkne.

Nå bor hun i **Bushwick**, bildene hang på atelieret hennes, da jeg besøkte henne der, mens USA fremdeles ga følelsen av å være et stort og gjestfritt land. Concrete Factory på veggene, umulig å få oversikt, det ser ut som det utenfor vinduene. Bylandskap, hustak, veggflater, profiler.

Liv Mette detaljerer, fokuserer på deler av en større helhet, et utsnitt, skjærer vekk, skjærer fra, hun avbilder et **eksakt ekstrakt**. Linjene er klare, enkle, stødige. Det handler om å være der, tilstede på stedet, tenker jeg, og om det å huske hvor en har vært. Maleriene hennes er gjengitt virkelighet.

En digital avbildning av et maleri mangler maleriets aura. Når jeg ser fargene i piksel, er det som om temperaturen i eggtemperaen har sunket. Jeg vil huske det jeg så i Liv Mettes atelier, **rustrødt**.

Tone Avenstroup, norsk lyriker bosatt i Berlin

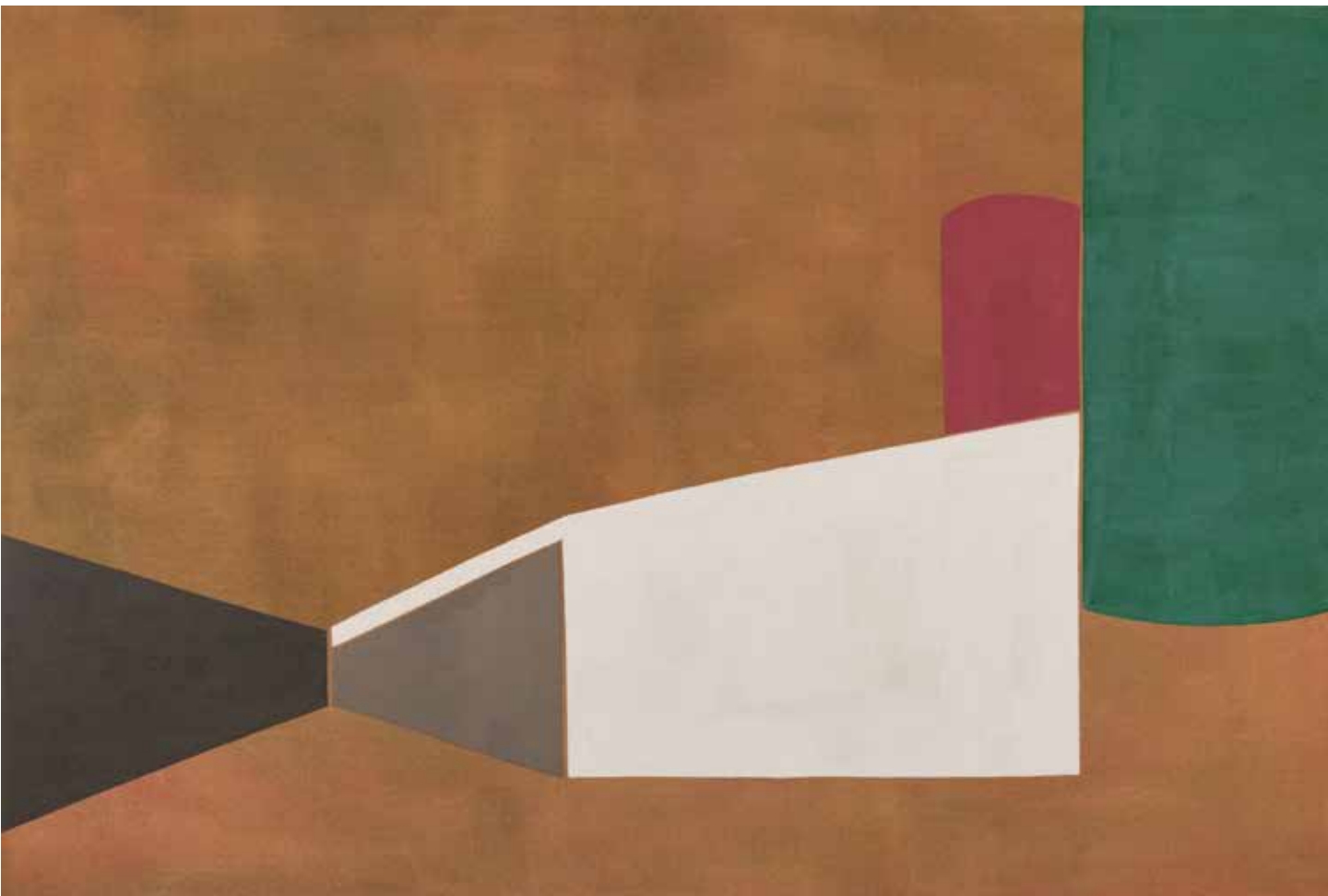


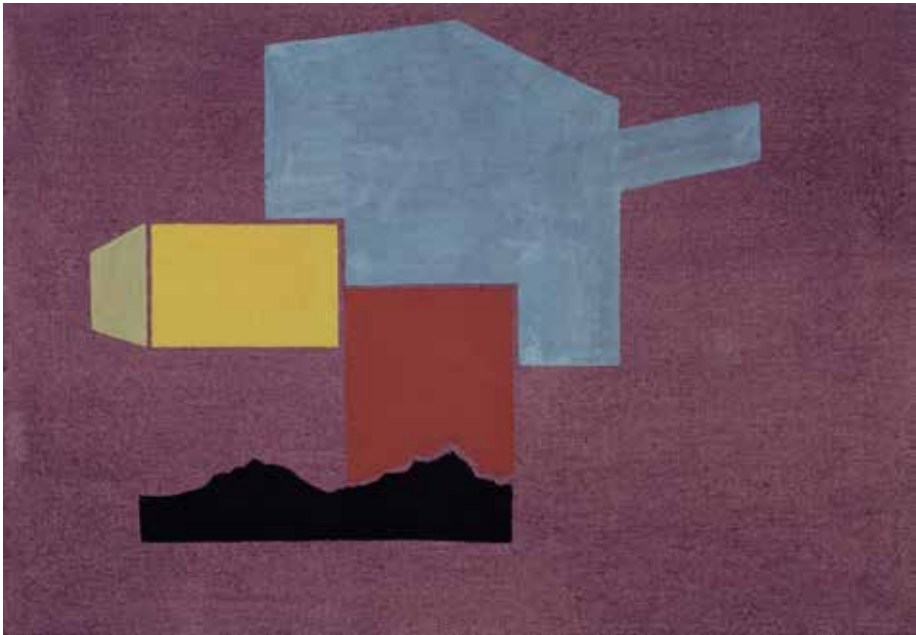
## ENGLISH TRANSLATION HERE

and toothsome textures of the powdered pigments and egg mediums she uses to mix them into life. Backgrounds are sometimes the areas where Larsen allows colors to visually intermingle and bleed through one another, especially in her larger works. Consequently, her montages of middle- and foregrounded forms, often filled in with more uniformly viscous admixtures, begin to come across as depth-creating, footprint-stamping, colorful shadow puppet-like characters—a troupe of implicitly post-industrial, meta-structural actors playing stop-motion roles of form-holders, chroma-bearers and spatial dwellers on some outdoor stage on a forsaken, extra-urban stretch of land, on a fall or spring afternoon in which mild temperatures and overcast skies cooperate to make the setting that much simpler to enthuse.

In Larsen's creative landscape, some of the forms, colors, compositions and 'characters' she develops will then reemerge in kindred bodies of work. Shapes appear in different proportions in other paintings and collages; collages take color cues from paintings and watercolors; watercolors and collages inform compositional and chromatic choices in paintings. And of course, Larsen keeps an ever-sharp eye on how subtle shifts or surprises in one productive mode might lead her to insights in another. All this from regarding very closely and formally dismantling a building or two, then turning constituent parts into inputs for serialized processes made manifest in interconnectedly generative ways. A landmark *fabrikk* in Norway, as it were, becomes a manufacturer and remanufacturer of itself. And Larsen's creative factory just keeps on humming. The characters in her plays keep doing their happy thing.

Tone Avenstrup, Berlin 2017







LIV METTE LARSEN was born in Oslo, Norway in 1952.

**1971-72** Westerdahls Reklametegneskole, Oslo, Norway. **1973-77** KHIO, Arts and Crafts School, Oslo, Norway

**1978-84** HdK/UdK, Masterclass by Prof.Fussmann, Berlin, Germany. **1984** Cofounder of Galerie Wissarth, Berlin

GRANTS

**1992** Berlin Senate's Cultural Affairs Department, Berlin, Germany. **1994/96/97/2006** Vederlagsfondet, Norway.

**2013** BKH Grant, Norway. **2014** Pollock-Krasner Foundation Grant, New York, USA. BKH Grant, Norway.

**2014/15/16** BKH Grant, Norway. **2016/17** BKH Exhibition Grant, Norway

SELECTED SOLO-AND TWO PERSON EXHIBITIONS

**2017** Concrete Factory Slemmestad Fabrikker, Trafo Kunsthall, Norway (C). **2016** Innblikk Utblikk NYC w/ E.Faye, Bærum Kunstforening, Norway. Insight/outsight w/ M.Gagnier, The Painting Center, New York. Out of the Ordinary w/ P. DeLuccia, Spectre Arts, Durham N.C. US. **2015** Urban Juxtapositions w/ C.Salmanson, Slag Gallery, Brooklyn/NY. 2014 Urban Formalities w/ P. DeLuccia, William Holman Gallery, New York (C). **2013** Slippery When Wet w/ G.Skaggs, SUGAR, Brooklyn/NY. Bushwick Skyline Bushwick, BOS, Brooklyn/NY. **2012** Rose Burlingham Gallery, w/ M.Magee, New York. 2011 360°scrap metal pieces w/ N.Fecht, Gal. K.Hilgemann, Berlin, Germany. Scrap Metal New York Paintings Helac Fine Art, New York. 2010 Berliner Blau Galerie K. Hilgemann, Berlin, Germany (C). **2008** Renaissance Walking Galeria Fruela, Madrid, Spain. Plaza Galerie K.Hilgemann, Berlin, Germany. 2007 Berliner Vertikale Galerie K.Hilgemann, Berlin, Germany (C). Kunst aus Norwegen w/ P.Berntsen, Kulturforum Schwerin, Germany. 2006 Schriftportraits Literaturhaus, Salzburg, Austria. 2005 rød, gul, blå w/ B.Geving, Asker Kunstforening, Norway (C). Grosse Vertikale Galerie K.Hilgemann, Berlin, Germany. 2003 über eine...w/ T.Avenstroup, Goethe Universität Frankfurt, Germany (E). 2002 Fragmentierungen Kunstsammlung Neubrandenburg, Germany (C). 2001 In Residence w/ T.Avenstroup, Kunsternes Hus, Oslo, Norway (C). Asker w/ B.Geving, Galerie K.Hilgemann, Berlin, Germany. 2000 an auf.. w/ H.E.Wiegand, Haugar, Norway & U Kamene, Chev, Czechia (C). Schriftportraits Galerie K.Hilgemann, Berlin, Germany (C). 1999 an auf w/H.E. Wiegand, Städtische Gal. Lüdenscheid, Germany (C). Galerie K.Hilgemann, w/ S.Windelen Berlin, Germany. Schriftportraits Galerie Annmarie Taeger, Frankfurt, Germany. Portretter Galleri LNM, Oslo, Norway. 1998 Goethe-Institut, w/ A.Redder, Oslo, Norway. 1997 Royal Norwegian Embassy, Berlin, Germany. 1996 Galerie Western-hagen, Cologne, Germany (Also 1990/89/87/86). Galleri Heer, Oslo, Norway. Galleri Færggaard, w/ H.E.Wiegand, Møn, Denmark. 1995 Marburger Kunstverein, Germany (C). Møre og Romsdal Kunstnersenter, Molde, Norway. 1994 Innblikk-Einblick-Utblick-Ausblick Galleri Heer, Oslo, Norway (C). Kunsthistorisches Institut, Bonn, Germany. 1990 Aalesund Kunstforening, Ålesund, Norway. 1989 Vær og vind w/ H.E. Wiegand, Goethe-Institut, Oslo, Norway. 1986 Quere Wege II w/ Y.Yo, Galerie Wissarth, Berlin, Germany. Galerie Scanart, Berlin, Germany. 1985 Standbild w/ H.E. Wiegand Galerie Wissarth, Berlin, Germany (E). Malerei Galerie Wissarth, Berlin, Germany (E). 1982 AV-Geschoss w/ A. Hillen, Berlin, Germany

SELECTED GROUP EXHIBITIONS

2017 Sideshow Nation, Sideshow Gallery, Brooklyn/NY (Also 2016/15/14/13). 2016 NOMENColorATURE Studio10 and Centotto, Brooklyn/NY. Cow Girl Show Brik Gallery, Hudson, NY, USA. Construction Site McKenzie Fine Art, New York. Hazan Projects, New York. Winterdrawing Show William Holman Gallery, New York. 2015 Hazan Projects, New York. Bushwick/ Berlin, BOS, Brooklyn/NY. Resurface MX Gallery, New York. Situation 74





Bleibtreu Galerie, Berlin, Germany. 2014 Bushwick Open: Twenty-Three Artists from In and Around, BOS, Brooklyn/NY. Works on Paper William Holman Gallery, New York. Berlin Gallery Weekend Galerie Kai Hilgemann, Berlin, Germany. Silhouettes Elizabeth Art Foundation, New York. 2012 MIC:CHECK Sideshow Gallery, Brooklyn/NY. Lineup, Round 3 and Lineup, Round 4 SUGAR, Brooklyn/NY. New Address Galerie Kai Hilgemann, Berlin, Germany. Arco Madrid, Spain with Galerie Kai Hilgemann (Also 2009/ 2011). 2010 Schaulager II Galerie Kai Hilgemann, Berlin, Germany. Pinta New York with Galerie Kai Hilgemann. Artists Books Tegnerforbundet, Oslo, Norway. 2008 Art Santander, Spain and Art Lisboa, Portugal with Galeria Fruela. 2007 paper works Galerie Kai Hilgemann, Berlin, Germany. 2006/07 Art Cologne, Germany with Galerie Kai Hilgemann. 2005 Fünf aus Norwegen Stiftung Landdrostei, Pinneberg, Germany. animal farm Galerie Kai Hilgemann, Berlin, Germany. 2004 .no Galerie Kai Hilgemann, Berlin, Germany. 9. Kunstinstallation Ernst&Young, Frankfurt/Main, Germany. Quaternio III Galerie am Turm, Berlin, Germany. Printed matter Galerie Kai Hilgemann, Berlin, Germany. 2003 Neue Räume w/ P.Berntsen & D.Medalla, Gal. K.Hilgemann, Berlin, Germany. Quaternio III Galleri Uffizi Bærum, Norway. Situation 12 Galerie Bleibtreu, Berlin, Germany. 2002 Quaternio III Centro Cultural de Sao Francisco, Joao Pessoa, Brazil. Situation 4 Galerie Bleibtreu, Berlin, Germany. Kein Strich zuviel Kunstmuseum Lüdenscheid, Germany (C). 2001 Linien Galerie Kai Hilgemann, Berlin, Germany. 2000/01 Art Frankfurt, Germany with Galerie Kai Hilgemann. 1999 Nordischer Klang Schloß Griebenow, Greifswald, Germany. Wasser Wind Wale Galerie Kai Hilgemann, Berlin, Germany. Art at the turn of the century Galerie Kai Hilgemann, Berlin, Germany. 1998 Gesellschaft für Gegenwarts-kunst, Augsburg, Germany (C). 1996 Museum Lodz, Museum Krakow, Poland (C). 10 Jahre Galerie Westernhagen, Köln, Germany. Henning Bilderschau Berlin, Germany (C). 1995 Museum Radom, Poland (C.) 1994 Positionen figurativer Malerei d.Gegenwart Gal.Schlehn, Hannover, Germany. Städtische Galerie Lüdenscheid, Germany. 1988 Abschlúsausstellung Galerie Wissarth, Berlin, Germany. 1987 WISSARTH Galerie Wissarth, Berlin, Germany (C). Berlin bleibt Nilreb Galerie Westernhagen, Cologne, Germany. Circustante Aria Galerie Wissarth Berlin, Germany. 1986 Luitpoldbad Bad Kissingen, Germany (C). Neue Bahnen- Altes Kreuz Galerie Wissarth, Berlin, Germany (E). 1985 Der Rote Kanal Galerie Wissarth, Berlin, Germany (E). die, die heute von heute... FB1 UdK., Ackerstraße, Berlin, Germany (C). 1984 Sofienberggaten w/E.Grøttum, and Notorische Reflexe, Oslo, Norway. Martin Luther Galleri Hammerlund, Oslo, Norway. Europäische Malerei der Gegenwart Trier, Germany (C). Opening show Galerie Wissarth, Berlin, Germany. 1983 Osloer Straße 4 Norwegian Students, HdK/UdK, Berlin, Germany (E). 1982 UKS, Oslo, Norway. Karl-Hofer-Symposium, Berlin, Germany (C)

#### SELECTED COLLECTIONS

2016 Fidelity Collection, Boston, USA. 2012 Caldic Collectie, Netherlands. 2011 Colección Ana Botella, Madrid, Spain  
2009 The Royal Norwegian Embassy, Berlin, Germany. Sørlandets Art museum, Kristiansand, Norway. 2008 Colección Irene o Ignacio Munoz, Madrid, Spain. Colección Masaveu Herrero, Spain. 2007 Asker commune, Norway. 2005 Collection Ernst&Young, Frankfurt/Main, Germany. Sparebanken Møre Art Collection, Ålesund, Norway. 2004 Art Collection Kreditanstalt für Wiederaufbau, Frankfurt, Germany. 2003 The Royal Norwegian Embassy, Berlin, Germany. 2002 Sørlandets Art museum, Kristiansand, Norway. Collection Ostseesparkasse Rostock, Germany. Puzzle, Art commission, Robert-Jungk-High-School, Berlin, Germany. 2001 National Museum, Oslo, Norway. 1998 Gesellschaft für Gegenwarts-kunst, Augsburg, Germany. 1995 Marburger Kunstverein, Germany. Artothek Masserberg, Germany. Museum Lüdenscheid, Germany. 1994 Norwegian Art Council, Norway. 1993 Neuer Berliner Kunstverein, Berlin, Germany. 1990 Aalesund Kunstforening, Norway

BACK INSIDE COVER

BACK COVER