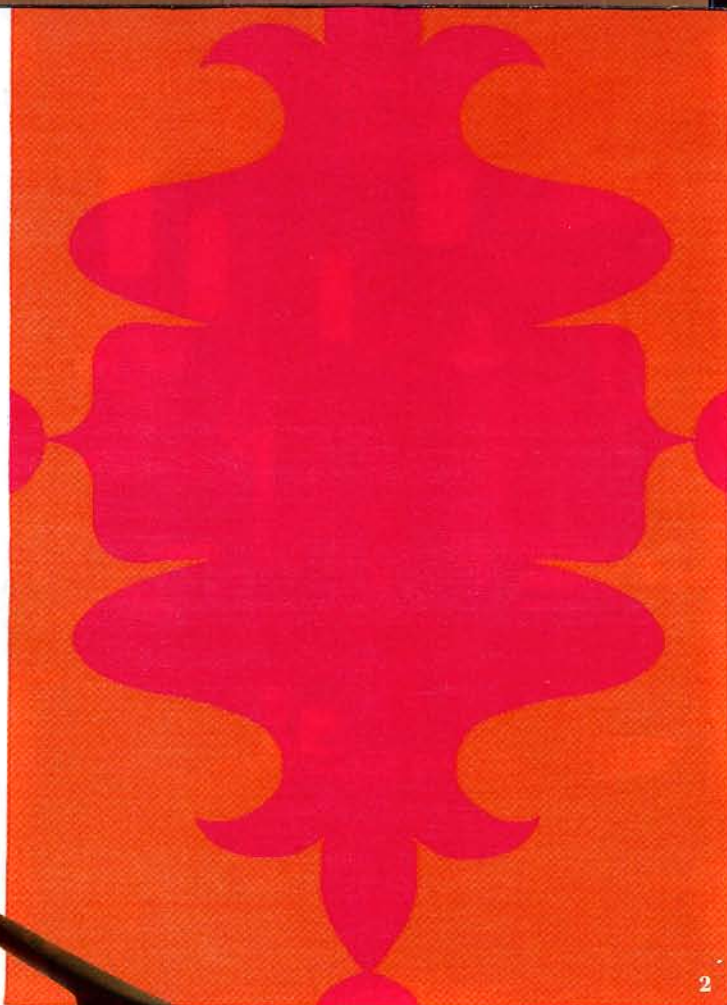


TREND REPORT

PAST, PRESENT, FUCHSIA

Designers have adapted the hottest hue of fashion's spring collections for the home, launching timeless pieces into the future.

BY ANGELICA MADUELL



1. The sleek **Stance chair** by Los Angeles designer John Neiro of Just Not Normal pairs walnut with dyed cowhide (justnotnormal.us). 2. Lotus Bleu is the exclusive West Coast dealer of the cotton dhurrie-weave **Orleans rug** by Madeline Weinrib (*available in seven sizes; \$350–\$2,250; lotusbleudesign.com*). 3. Z Gallerie's handcrafted metal **Casablanca lantern** comes in two sizes, 10 or 18 inches tall (\$8, \$15; zgallerie.com). 4. New York City sculptor **Michelle Jaffe** designed the **Fjord Collection**, a series of felt nesting bowls, for Artware Editions (*\$250/set of three; artwareeditions.com*). See *Resource Guide*, p. 114.

COURTESY OF THE MANUFACTURERS